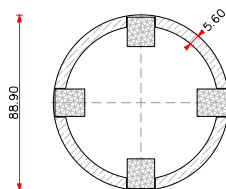


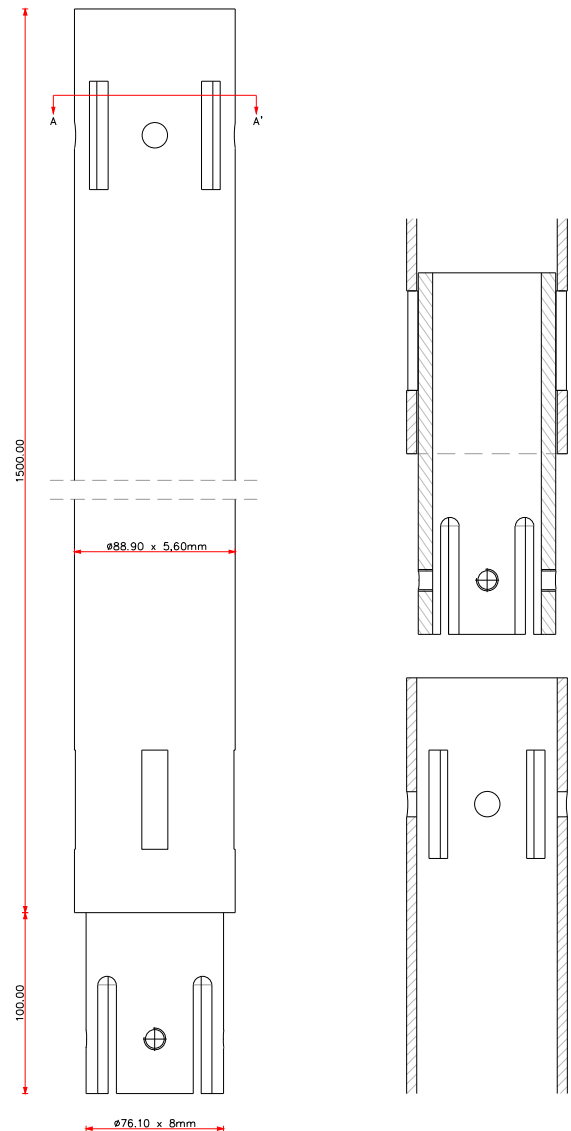


Art. no:	58313
Weight:	20,50 kg
Dimensions:	Pipe: 88,9 x 5,6 x 1500 mm
Materials:	Steel Type Pipe: S235 Surface treatment: Galvanized according to DIN EN ISO 1461
Installation:	Electric Ground Screw Driving Machine (Art.No: 12001) Pneumatic Ground Screw Driving Machine (Art.No: 12005) Hydraulic Ground Screw Driving Machine (Art.No: 12090)
Use:	Light construction e.g. porches, garden rooms and modular homes.
Fixation:	M12 Bolts

Cross cut pipe (A-A')



Side view



Drawing description	PRO-SERIES EXTENSION V-89 x 1500mm	
Date	Signed	Sheet number
12/2018	DVDE	5 of 7
Drawing number	Format	Document status
58313-V1	A4	DEF.

Products to combine:

- 58301 – GROUND SCREW V-89 x 1200mm
- 58302 – GROUND SCREW V-89 x 2100mm
- 58321 – V-89 ROUND FLANGE 220x12mm

FIRST BASE GROUND SCREWS
Patersweg 2, 5406 XJ
Uden, Holland.

info@firstbasegroundscrews.com
www.firstbasegroundscrews.com
0031 413 432 052