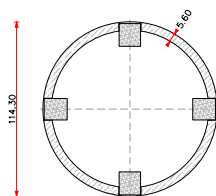


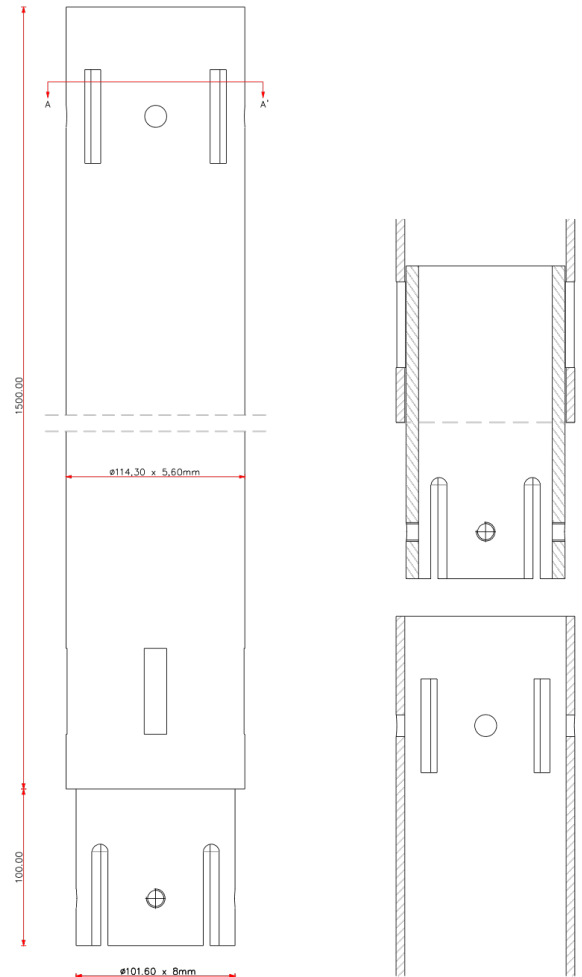


Art. no:	58413
Weight:	26,00 kg
Dimensions:	Pipe: 114,30 x 5,6 x 1500 mm
Materials:	Steel Type Pipe: S235 Surface treatment: Galvanized according to DIN EN ISO 1461
Installation:	Pneumatic Ground Screw Driving Machine (Art.No: 12005) Hydraulic Ground Screw Driving Machine (Art.No: 12090)
Use:	Light construction e.g. porches, garden rooms and modular homes.
Fixation:	M12 Bolts

Cross cut pipe (A-A')



Side view



Drawing description	PRO-SERIES EXTENSION V-114 x 1500mm	
Date	Signed	Sheet number
12/2018	DVDE	5 of 6
Drawing number	Format	Document status
58413-V1	A4	DEF.

Products to combine:

- 58401 – GROUND SCREW V-114 x 1200mm
- 58402 – GROUND SCREW V-114 x 2100mm
- 58421 – V-114 ROUND FLANGE 220x12mm

FIRST BASE GROUND SCREWS
Patersweg 2, 5406 XJ
Uden, Holland.

info@firstbasegroundscrews.com
www.firstbasegroundscrews.com
0031 413 432 052