

Partition System 3400

System 3400

All-glass wall system
22 - 50 mm wall thickness

The System 3400 all-glass partition wall combines maximum transparency with high cost-effectiveness. Its basis is formed by a variable aluminium floor and ceiling profile, which can support a number of different types of glazing. The glazed profiles are easy to install and allow for building tolerances. You can choose from a number of different sliding and hinged door elements made of glass or wood, with either aluminium or wooden block frames.

The System 3400 partition wall offers great variability while at the same time reducing the design to the essentials. It is fully compatible with other Strähle partition wall systems and suitable for corridors in which high transparency is required. Planners can vary the degree of transparency and the appearance of the glazing as desired by using adhesive films and decals. The System 3400 can equally be used to create highly sound-insulated glass fin connections on façades, also in conjunction with insulated glass. This predestines it for companies that wish to see their open working culture reflected in the structure of their rooms.

Design

All-glass construction

Construction

Single glazed 10-24 mm toughend safety glass / acoustic laminated glass

Element types

All-glass, ceiling-high

Surfaces

Aluminium profiles in E6 EV1 or powder-coated

Wall thickness

22 - 50 mm

Glass joint

Silicon seal or bonded

Sound insulation

Up to R_{wp} 41 dB

Doors

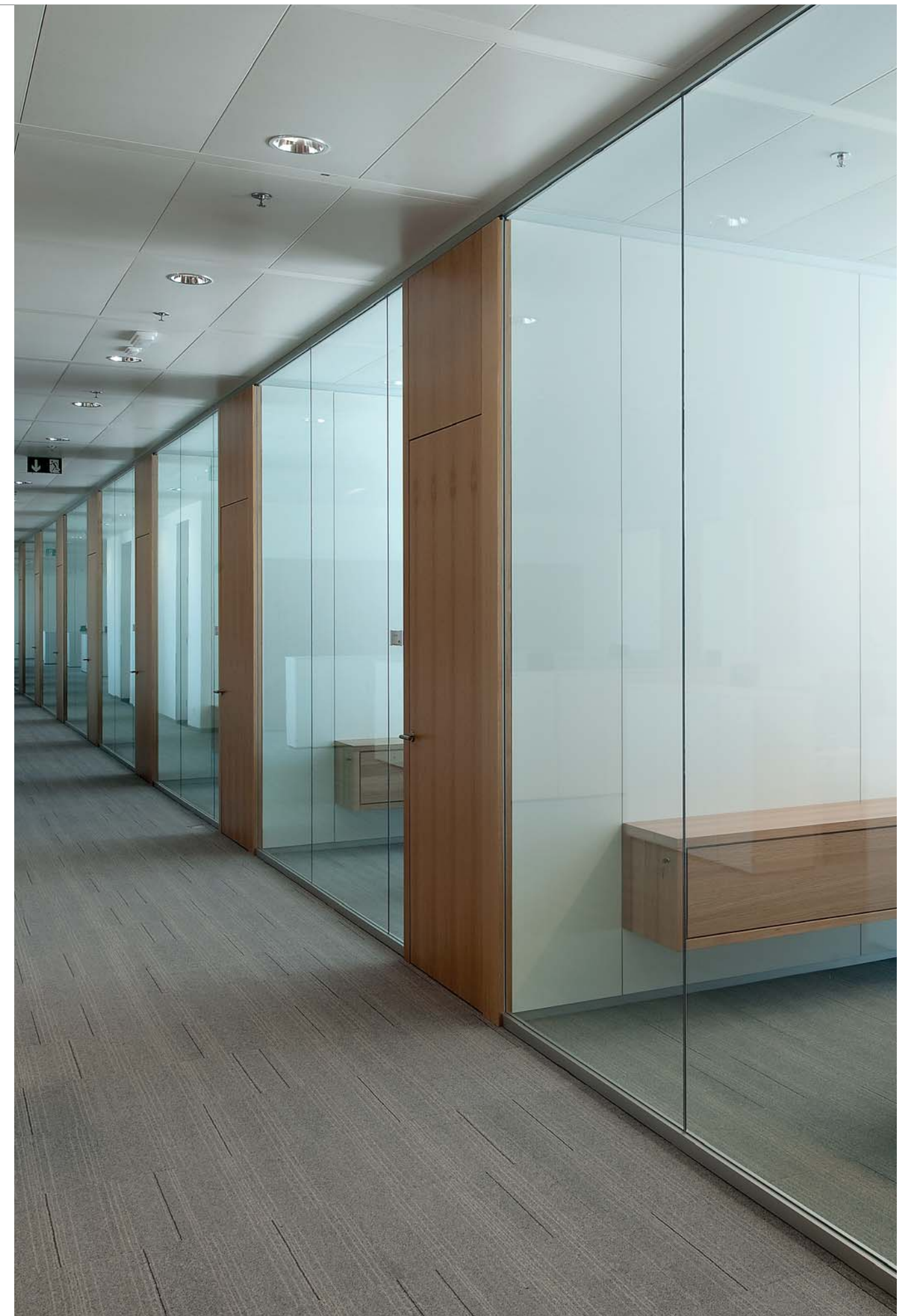
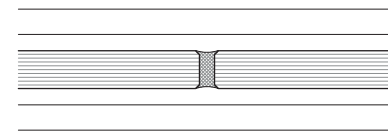
All-glass doors, aluminium-frame doors, solid doors, sliding doors

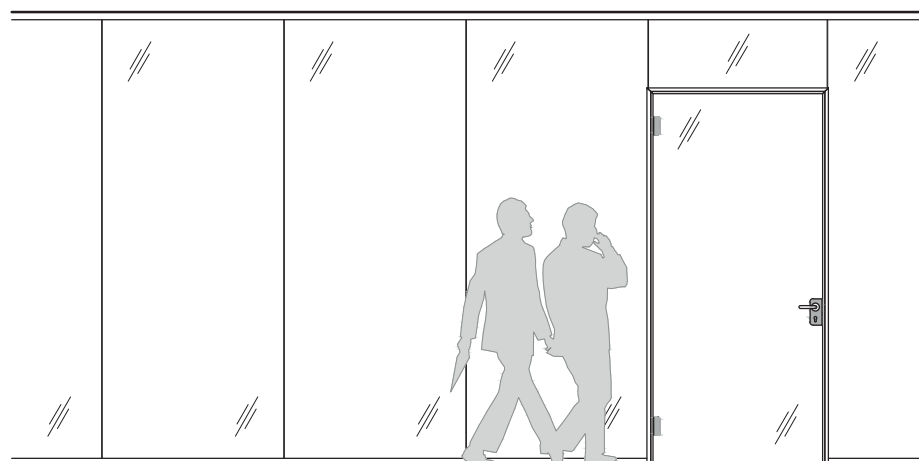
Accessories

Absorption elements (fitted as a shell in front of the glass)

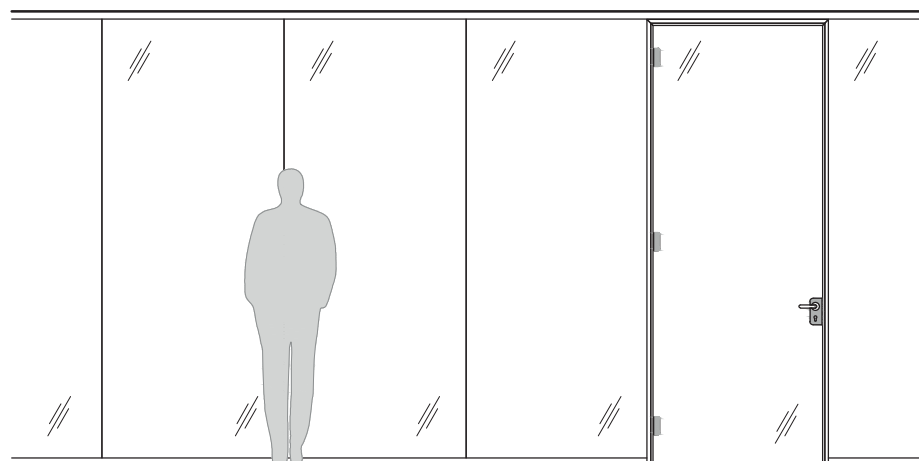


Fully-glazed

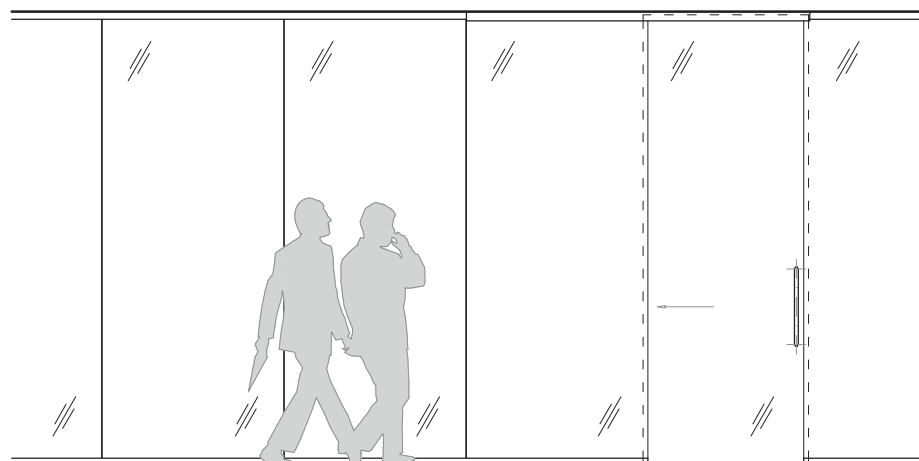




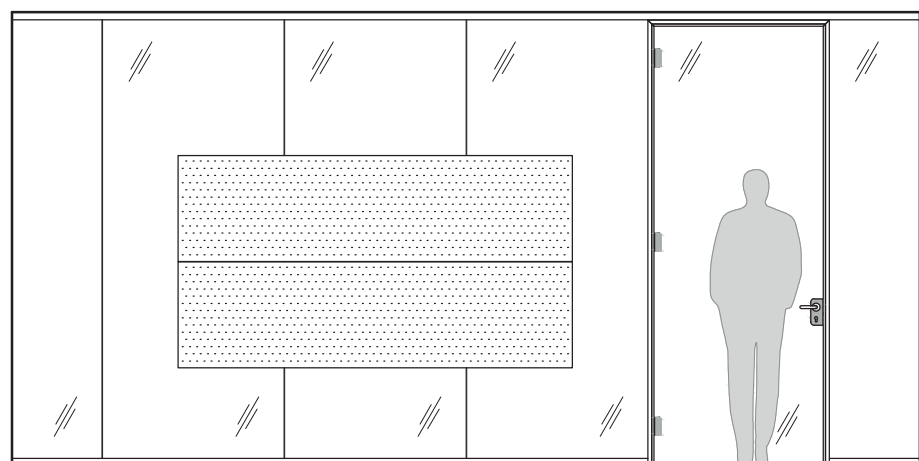
Corridor wall with all-glass door and toplight



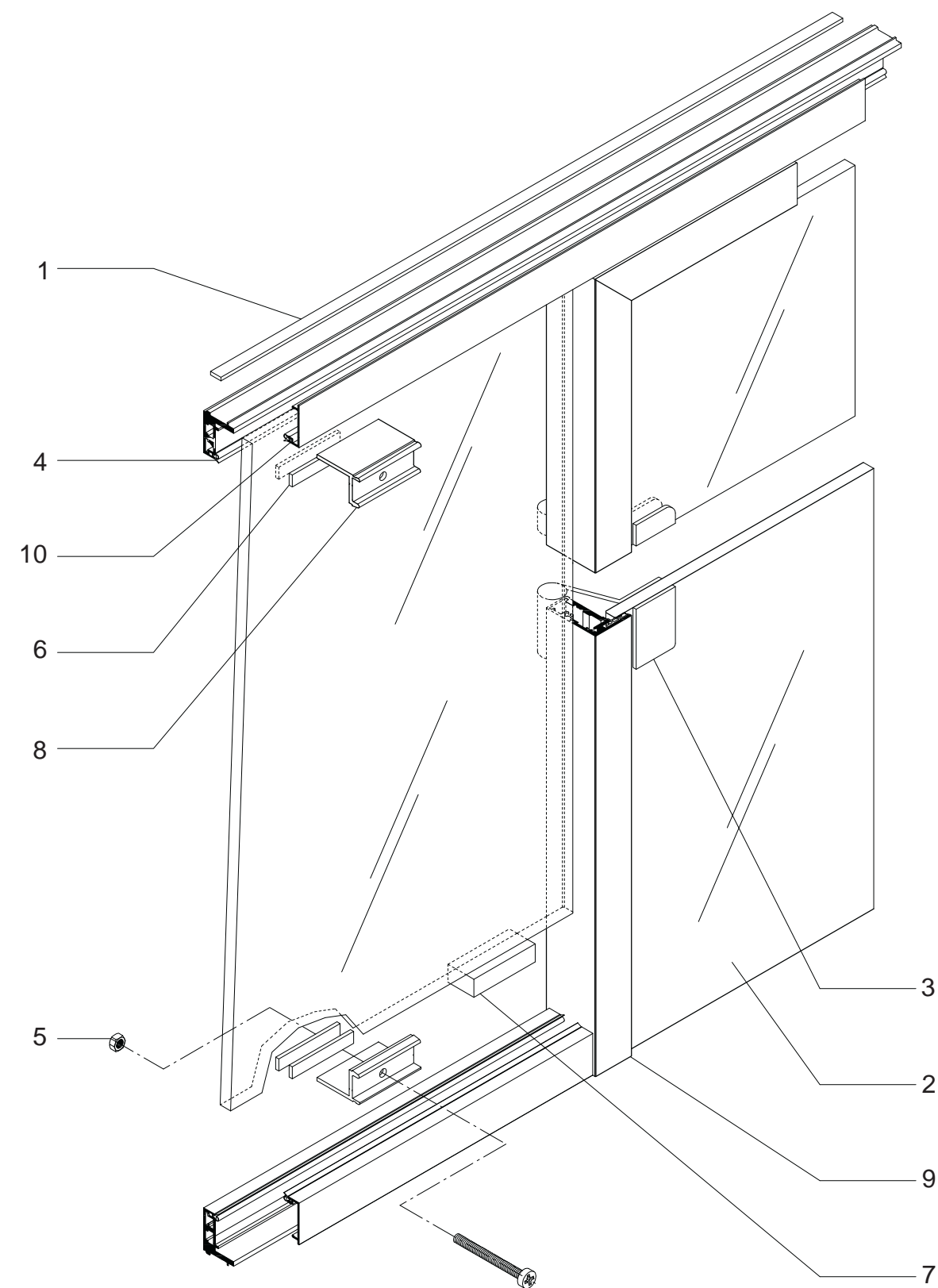
Corridor wall with ceiling-high fully-glazed door



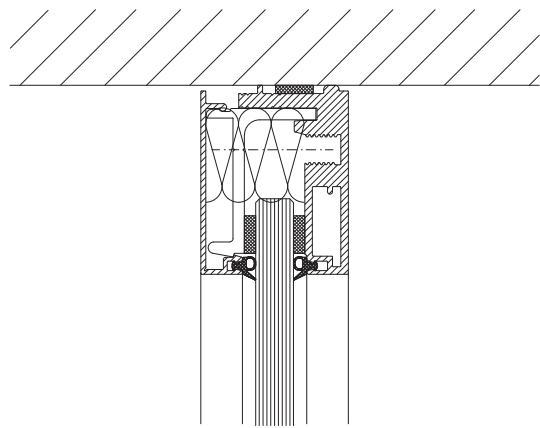
Corridor wall with all-glass sliding door



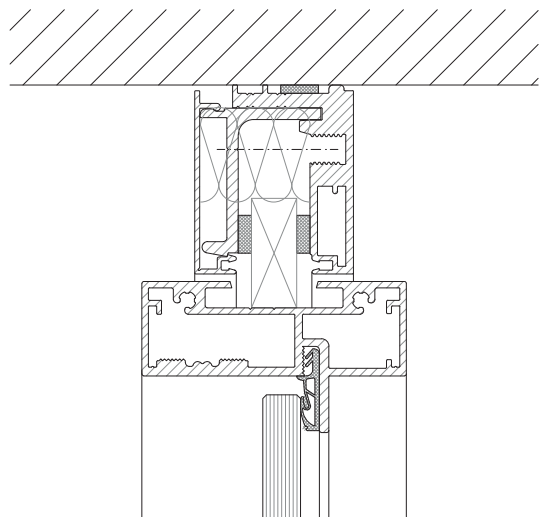
Glass wall with acoustic absorber



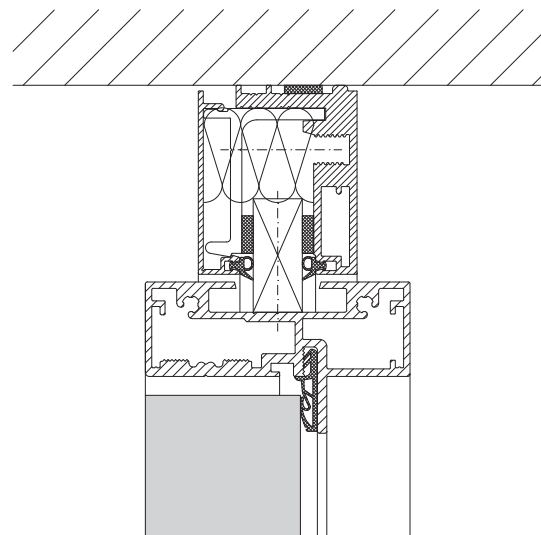
- | | | |
|------------------------|-----------------|-------------------|
| 1 Moltopren strip | 5 Nut | 9 Aluminium frame |
| 2 All-glass door panel | 6 Clamp support | 10 Glas strip |
| 3 All-glass door hinge | 7 Glass support | |
| 4 Glazing seal | 8 Clamping jaw | |



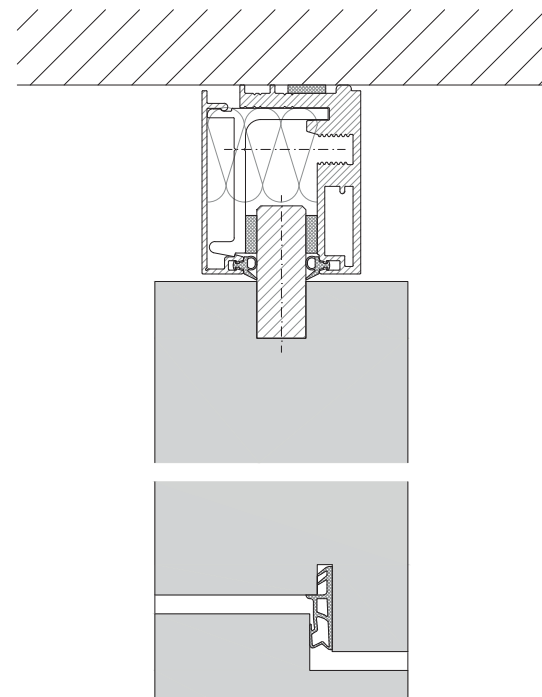
Glass wall ceiling connection



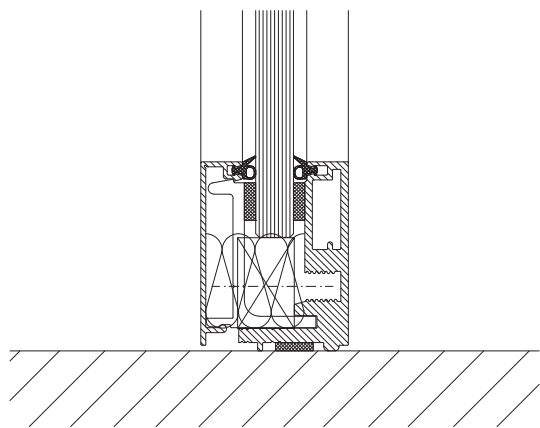
Sliding door fully-glazed ceiling connection



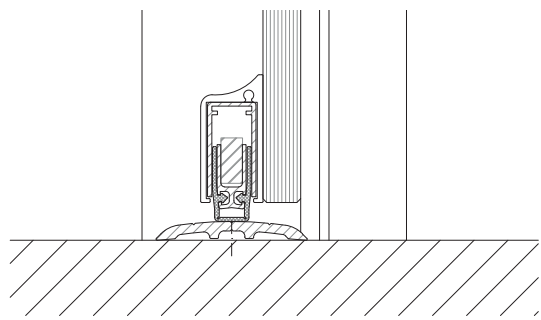
Solid wall ceiling connection



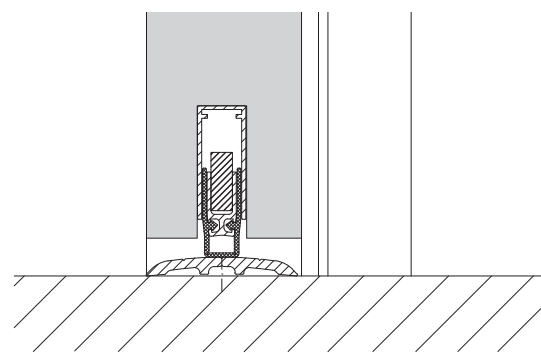
Solid wall 64 mm block frame



Glass wall floor connection



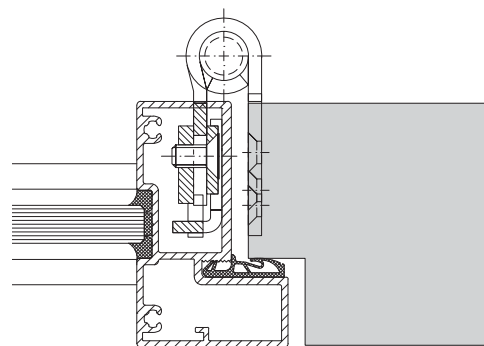
Sliding door fully-glazed floor connection



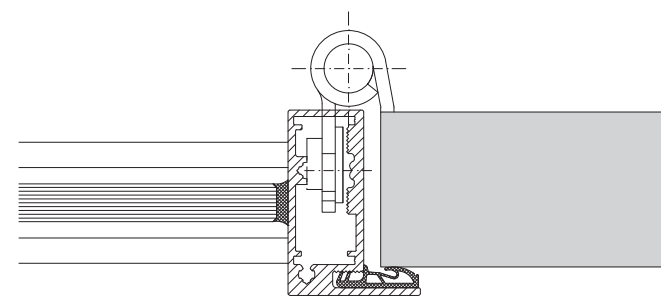
Solid wall floor connection



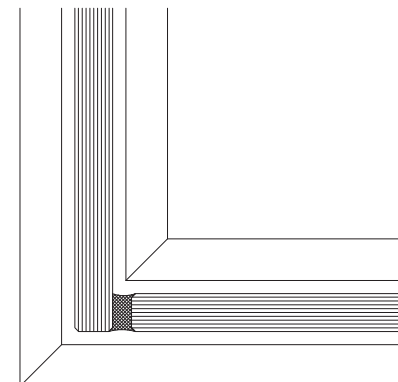
Glass wall abutment connection



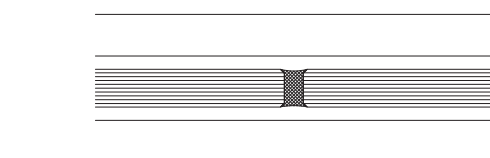
Solid wall 64 mm



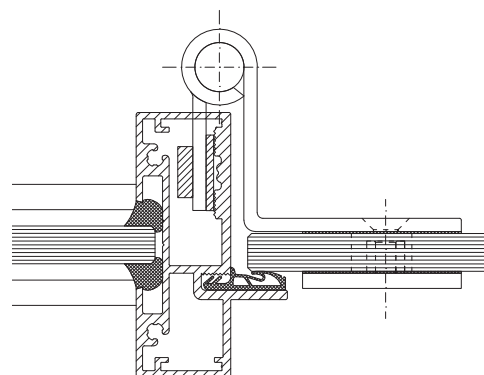
Solid wall 41 mm



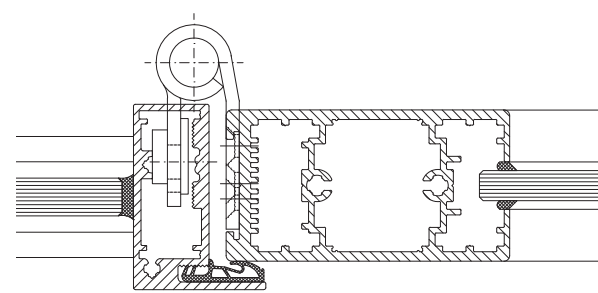
Glass wall 90° corner



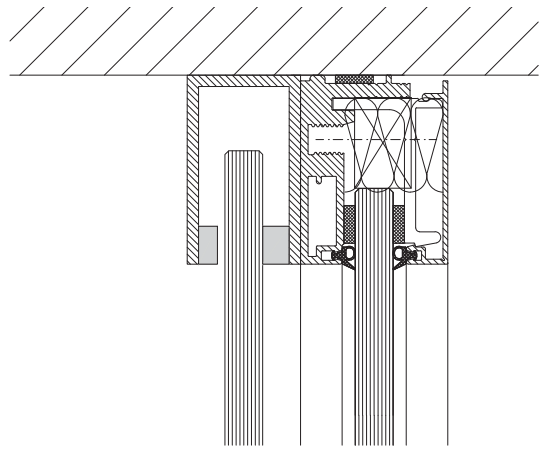
Glass wall modular grid joint



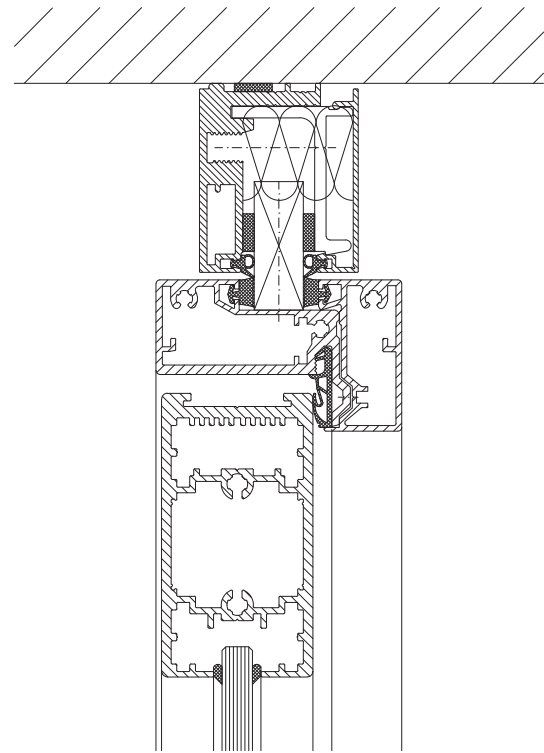
Door element fully-glazed



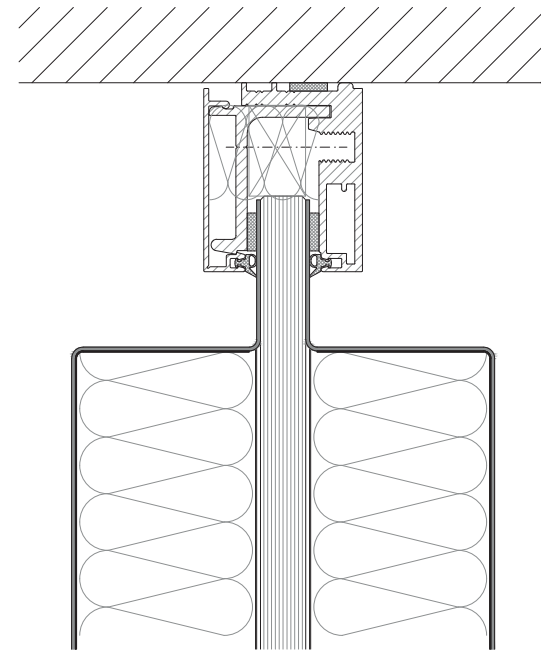
Door element aluminium framed door



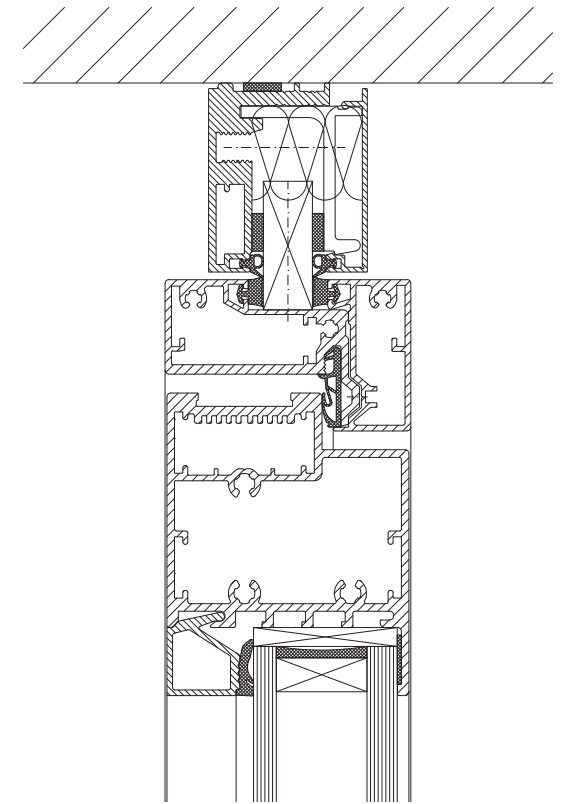
Sliding door fully-glazed ceiling connection



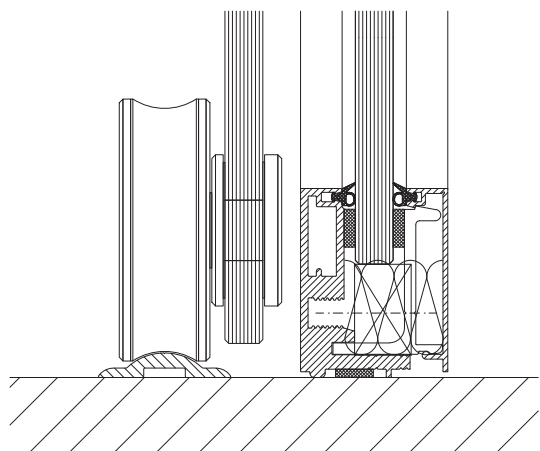
Aluminium framed door 40 mm ceiling connection



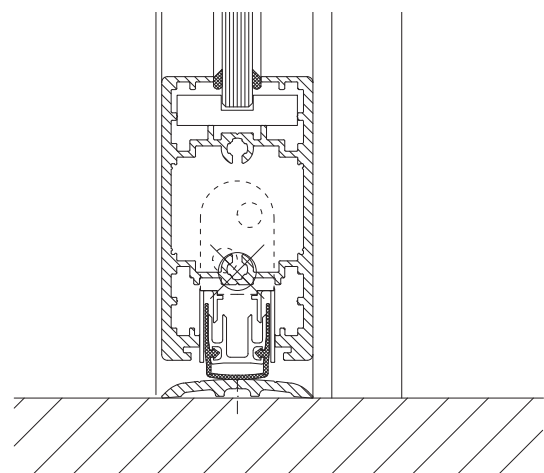
Absorber element ceiling connection



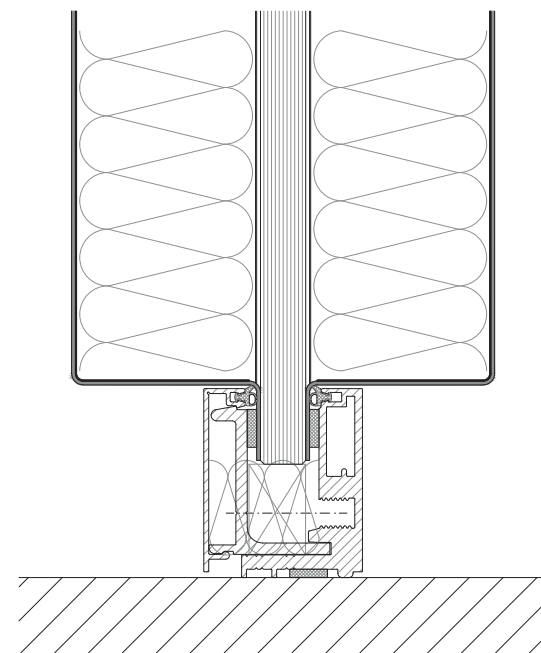
Aluminium framed door 64 mm ceiling connection



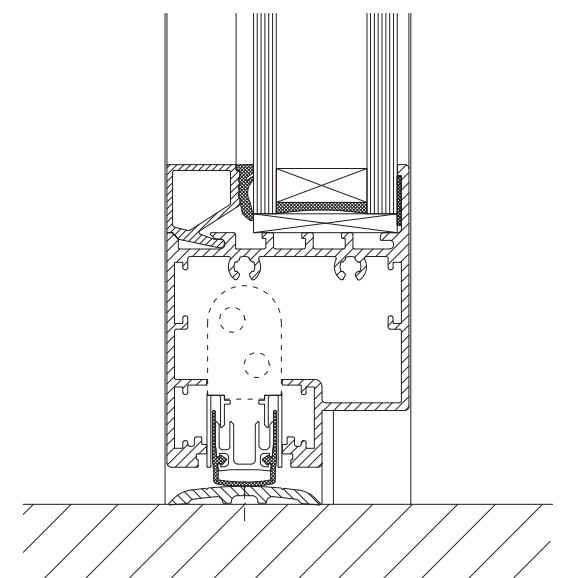
Sliding door floor connection



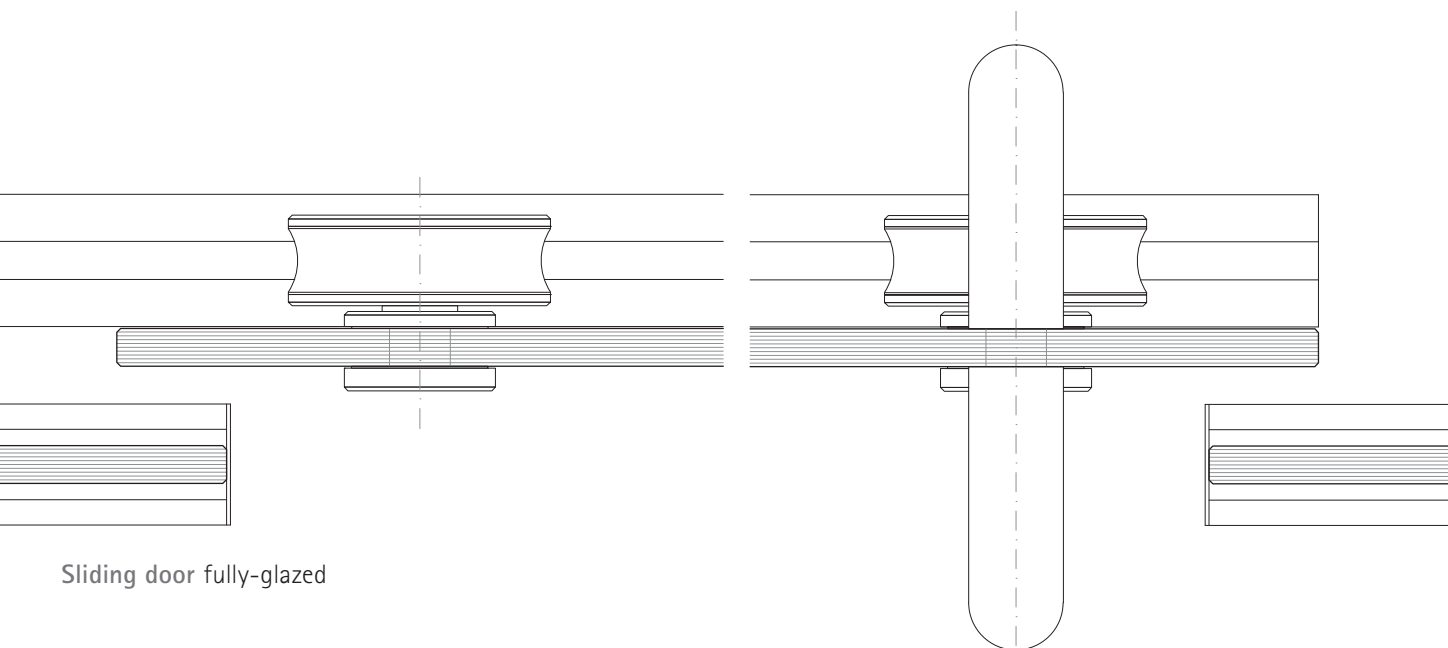
Aluminium framed door 40 mm floor connection



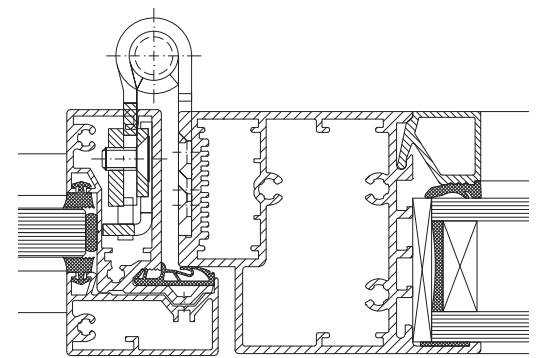
Absorber element floor connection



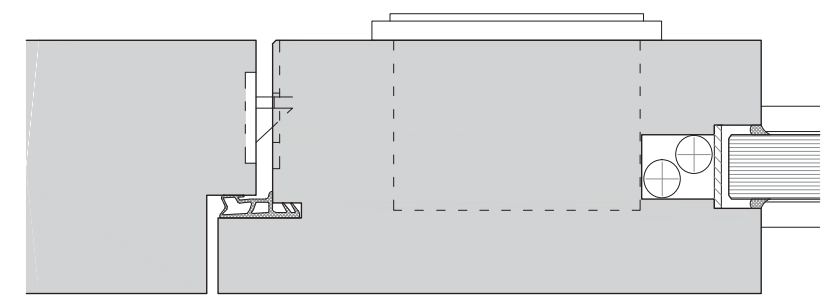
Aluminium framed door 64 mm floor connection



Sliding door fully-glazed



Door element Aluminium framed door 64 mm



Door element Solid wall 64 mm

| | |
|----------------------------------|--------------------------------------------------------------------------------------------------------------------------------------------------------------------------------------------------------------|
| Partion wall | |
| Design | Variable single-glazed all-glass system without vertical posts for maximum transparency |
| Wall thickness | Standard design: 10, 12 mm toughend safety glass; 16 mm sound-insulating laminated glass |
| Grid | Dimensions freely selectable, in accordance with static approval, module widths between 400 mm and 1600 mm |
| Heights | Build height freely selectable, in accordance with static approval for the relevant use, max. build height 4000 mm |
| Deflection | 50 mm profile: +/- 12 mm 35 mm profile: +/- 0 mm |
| Floor connection | 50 mm, optional 35 mm |
| Ceiling connection | 50 mm, optional 35 mm |
| Finishes | - Continuous glass front without visible frame - Aluminium profiles: anodised E6EV1, powder-coated based on RAL - Seals in light grey |
| Glazing | Toughend safety glass + laminated safety glass, 10 – 24 mm |
| Glass joints | Silicon seals or adhesive strip seals |
| Installation | - Vertical and horizontal wiring in the wall system - Switches, plug sockets and control elements can be integrated into solid walls / door side panels |
| Accessories | |
| Acoustic absorbers | Highly absorbent and sound-insulating partition absorbers can be flush-fitted, either as metal or wooden absorbers, perforation as per the Strähle collection |
| Climate controll elements | Strähle ÜS 60 air-flow elements for integration into door side panel or upper sections |
| Door elements | |
| Door frames | - Aluminium system frames with high-grade 3D hinges to support a variety of door types - Wooden block frame for 64 mm portal door |
| Door leaves | Solid doors: 41 and 64 mm Aluminium frame door: 40 and 64 mm All-glass door: 10 mm toughed safety glass Wooden portal door: 64 mm in block frame design with 64 mm wooden door panel, single rebate |
| Sliding doors | - Floor and ceiling-guided versions possible - ST 40 sound-insulating sliding door |
| Fittings | Three-piece adjustable door hinges, stainless steel, door handles from collection |
| Fire prevention | Fireproofed version not possible |

| Wall element | Construction / Description | Wall element Sound insulation in $R_{w,p}$ |
|---------------------|---------------------------------|--------------------------------------------|
| Fully-glazed | Toughend safty glass 10 mm | 32 dB |
| | Toughend safty glass 12 mm | 32 dB |
| | Acoustic laminated glass 12 mm* | 38 dB |
| | Acoustic laminated glass 16 mm | 40 dB |
| | Acoustic laminated glass 20 mm | 41 dB |
| | Acoustic laminated glass 24 mm | 41 dB |

| Door element | Construction / Description | Door element Sound insulation in $R_{w,p}$ | 2-leaved version |
|------------------------------|---------------------------------------------------------------------------------------------------------------------------|--------------------------------------------|------------------|
| Solid door | Solid door leaf 41 mm | 32 dB | |
| | Sound insulation door leaf 41 mm | 38 dB | |
| | Solid door leaf 64 mm | 38 dB | x |
| Fully-glazed door | Fully-glazed door 10 mm with floor gasket | 32 dB | |
| Aluminium framed door | Aluminium framed door 40 mm 8 mm toughend safety glass 8mm acoustic laminated glass 12 mm acoustic laminated glass | 32, 34, 37 dB | x |
| | Aluminium framed door 64 mm - 38 mm double glazed | 37 dB | x |
| Sliding door | Sound insulation sliding door | 34 dB | |

The tolerance for calculating the $R_{w,r}$ value according to DIN 4109 is -2 dB, and -5 dB in the case of door elements

The deduction figure for door elements between 2.5 and 3.0 m in height is -2 dB

*Static certification only up to a height of 2100 mm.

Strähle Raum-Systeme GmbH
www.straehle.de
info@straehle.de

Gewerbestraße 6
71332 Waiblingen
T +49 7151 1714-0
F +49 7151 1714-320

Wurzelweg 5
14822 Borkheide
T +49 33845 66-0
F +49 33845 66-200

Austria
Industriestraße 9
2353 Guntramsdorf
T +43 2236 23232-0
F +43 2236 23232-13

Switzerland
Dellenbodenweg 1
4452 Itingen
T +41 61 463 1332
F +41 61 463 1333