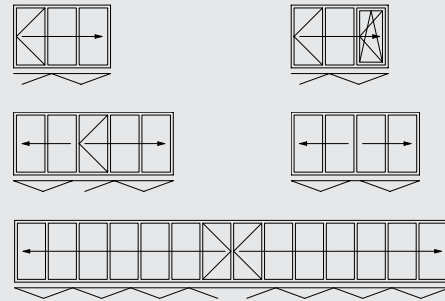


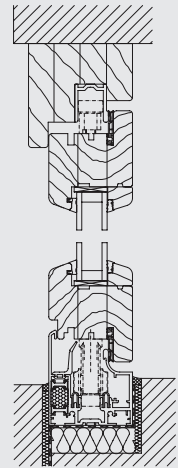
FLOOR TRACKS



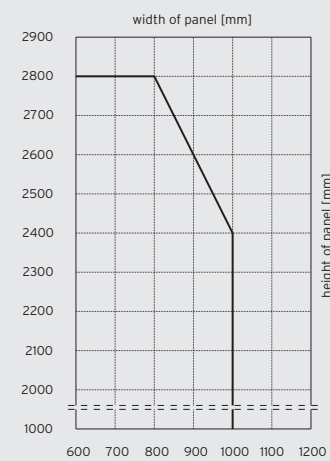
CONFIGURATION VARIANTS



VERTICAL SECTION



PANEL SIZE CHART



VARIANTS

- ▮ Floor mounted or top-hung folding glass door
- ▮ Panels can be ordered to open either internally or externally, to the left and/or right

PROFILE SYSTEM

- ▮ 66 mm panel thickness
- ▮ Slim frame and panel profiles (panel joint 169 mm)
- ▮ Triple glue-laminated panel, frame with solid mortice and tenon joints
- ▮ Increased stability due to strength of aluminium profile for retention of door furniture
- ▮ Standard timber: pine or spruce, other timbers optional
- ▮ Flush floor track without upstand for unhindered access available
- ▮ Tilt and turn within folding panel possible
- ▮ Double wraparound seal protects from wind and rain
- ▮ Manufactured from a renewable source of timber

WINDOW/DOOR SYSTEM

- ▮ Can be combined with SL 68 standard window systems: Tilt and turn, fixed units, parallel slide and tilt, etc.

FITTINGS

- ▮ No protruding runner and guide tracks
- ▮ Concealed fittings for one-handed operation
- ▮ Lockable in any partly open position

GLAZING

- ▮ Heat-insulating glass as standard
- ▮ Glass thickness from 5 to 28 mm available

SURFACE FINISH

- ▮ Wood finish according to SL colour chart: ecologically friendly water-based lacquer

U-VALUE

- ▮ $U_w = 1,3 \text{ W/m}^2\text{K}$ ($U_g = 0,7 \text{ W/m}^2\text{K}$, insulated seldedge) according to EN ISO 10077 on the basis of a three panel folding glass door, WxH 2700 x 2300 mm

MAXIMUM PANEL SIZES

- ▮ 1000 x 2400 mm
- ▮ 800 x 2800 mm
- ▮ Panel weight up to 70 kg
- ▮ Special sizes on request

TESTED FOR

- ▮ Ventilation Class 3 to EN 12 207
- ▮ Impermeability to rain Class 7A to EN 12 208
- ▮ Resistance to wind Class C 3 to 12 210
- ▮ Burglar resistance class WK2 / WK2N according to DIN EN 1627-1630:1999-04



5670208-990 / 06.2014 / subject to technical changes



FOLDING GLASS DOOR
SL 66



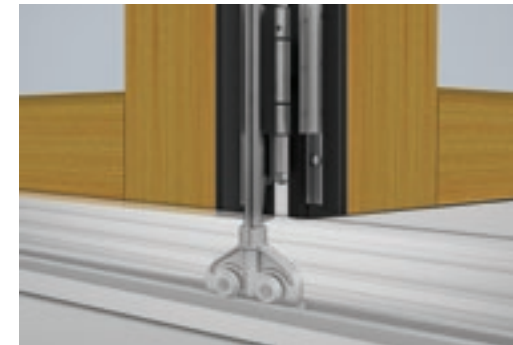
SAFE OPERATION

The entry / exit panel can be secured by means of a special catch and can be carried along safely with the moving façade.



ENGINEERED

Stainless steel rollers and stainless-steel bearing surfaces ensure an effortless sliding action of the folding glass door. Easy to open and to close.



HEAT INSULATION

High-quality wood offers the best heat insulation according to the latest energy conservation regulations (EnEV).



EASE

Natural wood creates a warm and natural atmosphere. A wide variety of colours and timbers are available creating exciting design possibilities.



SECURITY AND COMFORT

The integrated multipoint locking system and the comfortable door handle with catch bolt, lock and profile cylinder ensure high security. Configuration with burglar resistance class 2 is available on request.



SUSTAINABILITY

Certified woods from sustainable forests are available as an optional extra. All components are tested to be environmentally-friendly and are mechanically connected to each other which means they can be separated easily for recycling.



STABILITY

24 mm throwbolts provide additional stability to the system and also increase security.



WIDTH/HEIGHT ADJUSTMENT

Even after installation the folding glass door can be easily height-adjusted by about 8 mm - which is important if settling of the building occurs.

