

SINUS

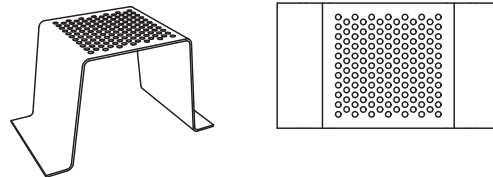
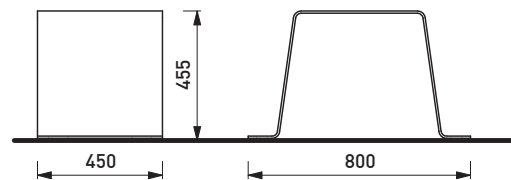
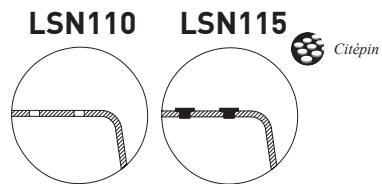


Ved at udvide det oprindelige koncept med trægitter blev Sinus skabt af en række separate bænke med et umiskendeligt udtryk.

Stærke stålplader bøjes let på en trapezformet profil - som i tilfældet med den længste bänk - forstærket med en næsten usynlig ribbe, der giver en meget solid form. Perforeringen er et tilbageblik på den ægte æstetik fra 1960'erne. Kombinationen af et unikt sædemønster med plast 'knapper' isolerer det kolde metal samtidig med at det giver den ultimative siddekomfort. En subtil, men vigtig detalje er muligheden for, at lade bænken "vokse" op af fortovet rent optisk.

De galvaniserede stålpladestrukturer er også tilgængelige med pulverlakering eller helt uden overfladefinish. Citépin sædet isolerer ståloverfladen termisk og giver dermed sublim komfort.

SINUS - LSN110 / LSN115



ILLUSTRATIVE PHOTO

TECHNICAL SPECIFICATIONS 2/5
LSN110 / LSN115 - SINUS



mmcite.com

Rozměry výrobků mají informativní charakter. Výrobce si vyhrazuje právo na změnu technické specifikace bez předchozího upozornění. Rozměry spodní stavby a způsob osazení výrobku jsou závazné. Rozteče kotev rozměřovat dle rozměrů dodaného výrobku.
All product sizes have an informative character. The Producer reserves the right to amend the technical specification at any time without previous warning. The size of foundation baseplate and the method of mounting of the product are imperative. Anchor spacing measure out by measurements of supplied product.
Die Abmessungen der Produkte sind informativ. Der Hersteller behält sich das Recht an Änderungen der technischen Spezifikationen vor, ohne vorher darauf hinzuweisen. Abmessungen der Fundamentierung - Unterbau und Art des Produkteinbaus sind verbindlich. Ankerabstand gemäß der gelieferten Produktabmessungen dimensionieren.

SINUS - LSN110 / LSN115

Seat 0.8m long

Variations:	LSN110	steel seat with perforation
	LSN115	steel seat with Citépin
Construction type:	steel construction made of perforated bent steel sheets	
Coating:	the steel construction is equipped with a protective layer of zinc and powder coating	
Support frame:	8 mm thick bent steel sheets with welded heels for anchoring	
Seat:	perforated coated steel area of 472 × 450mm alternately supplied with Citépin blind flanges	
Colour scheme:	shades of polyester powder coatings in the fine structure mat, standardly provided by mmcité other shades according to the RAL sampler are available on request	
Anchoring:	freely laid on paving or anchoring under paving into concrete foundation using M8 threaded rods All supplies of street furniture must be fixed according to the manufacturer's technical instructions. If these indications are not met, you risk a damage of product and human consequences. The manufacturer declines any responsibility for possible damages caused, directly or indirectly, to people, animals or things caused by non-compliance with the instructions manuals and, in particular, with installing, use and service operating instruction.	
Weight:	42kg	
Option:	different colour than standard colour	

TECHNICAL SPECIFICATIONS 1/5

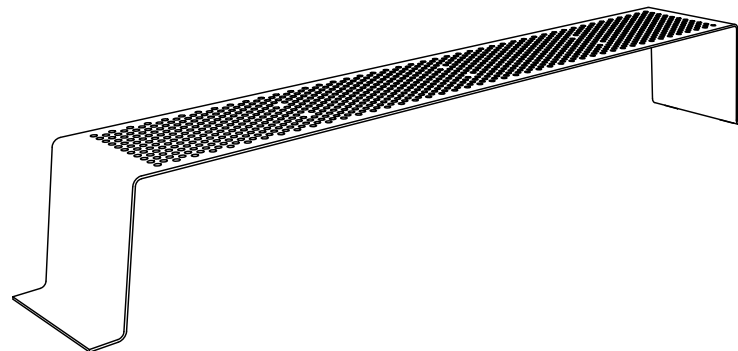
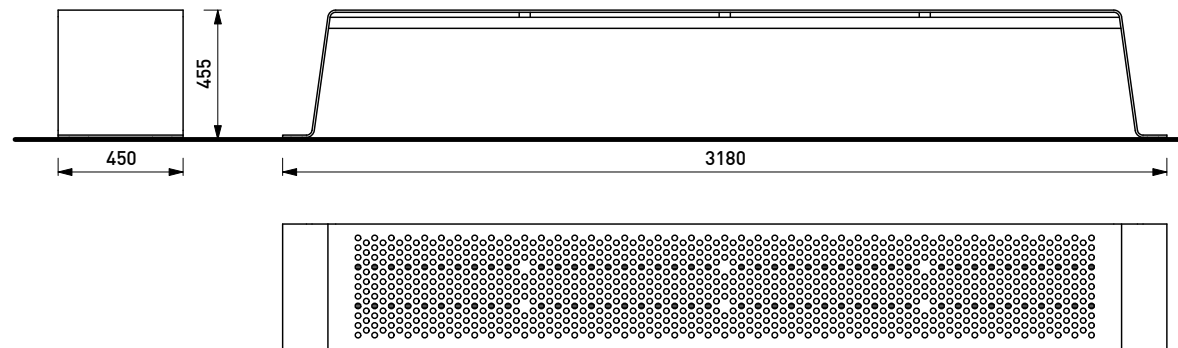
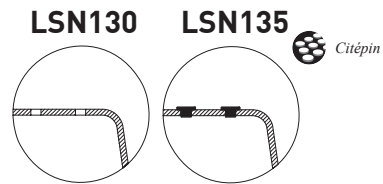
LSN110/LSN115 - SINUS



mmcite.com

All product sizes have an informative character. The Producer reserves the right to amend the technical specification at any time without previous warning. The size of foundation baseplate and the method of mounting of the product are imperative. Anchor spacing measure out by measurements of supplied product.

SINUS - LSN130 / LSN135



ILLUSTRATIVE PHOTO

Rozměry výrobků mají informativní charakter. Výrobce si vyhrazuje právo na změnu technické specifikace bez předchozího upozornění. Rozměry spodní stavby a způsob osazení výrobku jsou závazné. Rozteče kotev rozměřovat dle rozměrů dodaného výrobku.
All product sizes have an informative character. The Producer reserves the right to amend the technical specification at any time without previous warning. The size of foundation baseplate and the method of mounting of the product are imperative. Anchor spacing measure out by measurements of supplied product.
Die Abmessungen der Produkte sind informativ. Der Hersteller behält sich das Recht an Änderungen der technischen Spezifikationen vor, ohne vorher darauf hinzuweisen. Abmessungen der Fundamentierung - Unterbau und Art des Produkteinbaus sind verbindlich. Ankerabstand gemäß der gelieferten Produktabmessungen dimensionieren.



mmcite.com

SINUS – LSN130 / LSN135

Bench without backrest, 3m long

Variations:	LSN130	steel seat with perforation
	LSN135	steel seat with Citépin
Construction type:	steel construction made of perforated bent steel sheets	
Coating:	the steel construction is equipped with a protective layer of zinc and powder coating	
Support frame:	8 mm thick bent steel sheets with welded heels for anchoring	
Seat:	perforated coated steel area of 2,852 × 450mm alternately supplied with Citépin blind flanges	
Colour scheme:	shades of polyester powder coatings in the fine structure mat, standardly provided by mmcité other shades according to the RAL sampler are available on request	
Anchoring:	freely laid on paving or anchoring under paving into concrete foundation using M8 threaded rods All supplies of street furniture must be fixed according to the manufacturer's technical instructions. If these indications are not met, you risk a damage of product and human consequences. The manufacturer declines any responsibility for possible damages caused, directly or indirectly, to people, animals or things caused by non-compliance with the instructions manuals and, in particular, with installing, use and service operating instruction.	
Weight:	109kg	
Option:	different colour than standard colour	

TECHNICAL SPECIFICATIONS 1/5

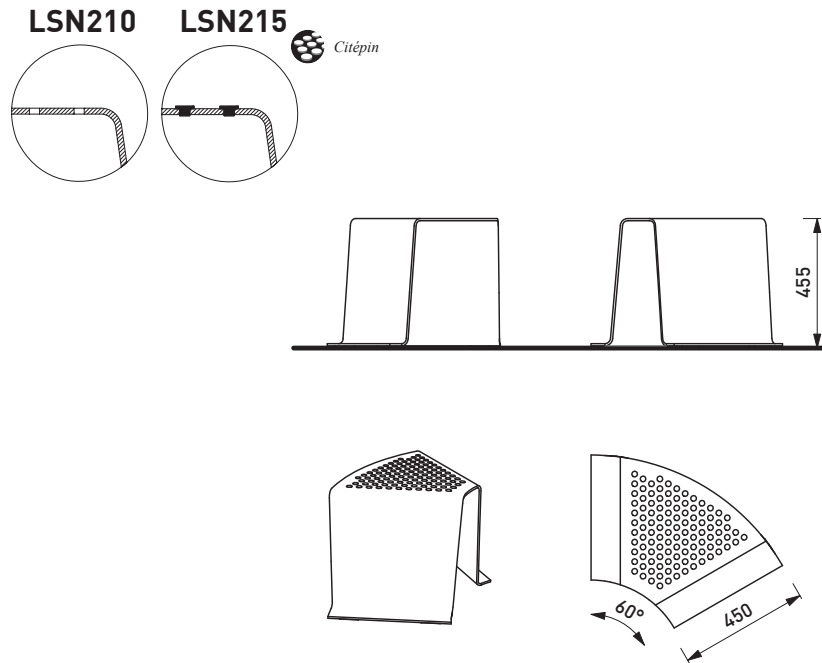
LSN130/LSN135 - SINUS



mmcité.com

All product sizes have an informative character. The Producer reserves the right to amend the technical specification at any time without previous warning. The size of foundation baseplate and the method of mounting of the product are imperative. Anchor spacing measure out by measurements of supplied product.

SINUS - LSN210 / LSN215



ILLUSTRATIVE PHOTO

Rozměry výrobků mají informativní charakter. Výrobce si vyhrazuje právo na změnu technické specifikace bez předchozího upozornění. Rozměry spodní stavby a způsob osazení výrobku jsou závazné. Rozteče kotvěv rozměřovat dle rozměrů dodaného výrobku.
All product sizes have an informative character. The Producer reserves the right to amend the technical specification at any time without previous warning. The size of foundation baseplate and the method of mounting of the product are imperative. Anchor spacing measure out by measurements of supplied product.
Die Abmessungen der Produkte sind informativ. Der Hersteller behält sich das Recht an Änderungen der technischen Spezifikationen vor, ohne vorher darauf hinzuweisen. Abmessungen der Fundamentierung - Unterbau und Art des Produkteinbaus sind verbindlich. Ankerabstand gemäß der gelieferten Produktabmessungen dimensionieren.



mmcité.com

SINUS – LSN210 / LSN215

Arched bench without backrest, 60° sector

Variations:	LSN210	steel seat with perforation
	LSN215	steel seat with Citépin
Construction type:	steel construction made of perforated bent steel sheets	
Coating:	the steel construction is equipped with a protective layer of zinc and powder coating	
Support frame:	8mm thick bent steel sheets with welded heels for anchoring	
Seat:	perforated coated steel area of 450 × 450mm alternately supplied with Citépin blind flanges	
Colour scheme:	shades of polyester powder coatings in the fine structure mat, standardly provided by mmcité other shades according to the RAL sampler are available on request	
Anchoring:	freely laid on paving or anchoring under paving into concrete foundation through using M8 threaded rods All supplies of street furniture must be fixed according to the manufacturer's technical instructions. If these indications are not met, you risk a damage of product and human consequences. The manufacturer declines any responsibility for possible damages caused, directly or indirectly, to people, animals or things caused by non-compliance with the instructions manuals and, in particular, with installing, use and service operating instruction.	
Weight:	38kg	
Option:	different colour than standard colour	

TECHNICAL SPECIFICATIONS 1/5

LSN210/LSN215 - SINUS

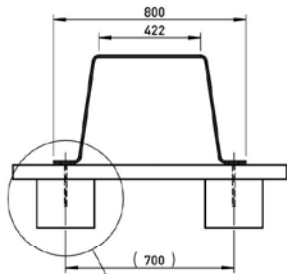


mmcité.com

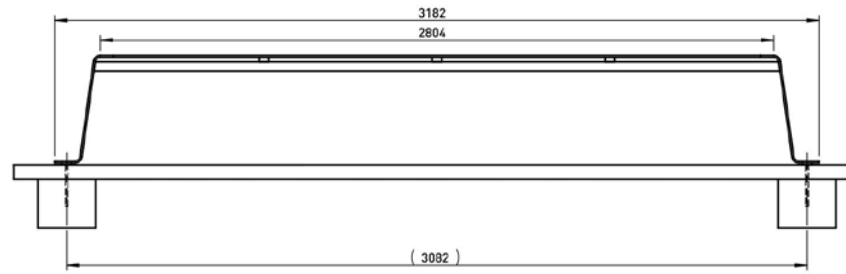
All product sizes have an informative character. The Producer reserves the right to amend the technical specification at any time without previous warning. The size of foundation baseplate and the method of mounting of the product are imperative. Anchor spacing measure out by measurements of supplied product.

SINUS - FORANKRING

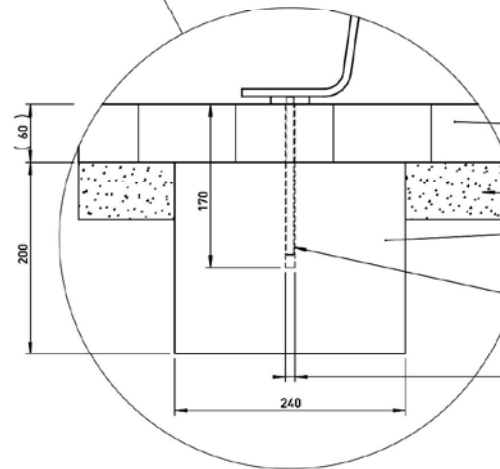
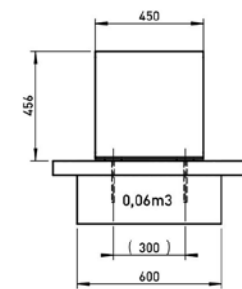
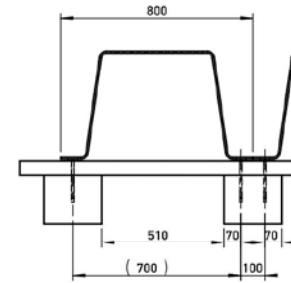
LSN110/115



LSN130/135



SKLÁDÁNÍ PŘÍMÝCH LAVIČEK
ASSEMBLING THE STRAIGHT BENCHES
ZUSAMMENSETZUNG VON DER GERADEN PARKBÄNKE



DLAŽBA / PAVEMENT / PFLASTERUNG

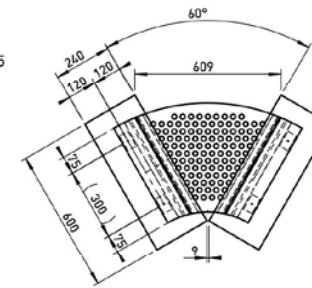
PODSYP / GRAVEL SUB-BASE / KIES UNTERGRUND

BETON / CONCRETE C12/15

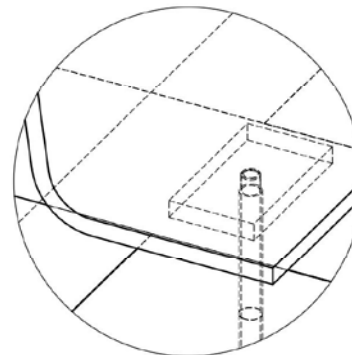
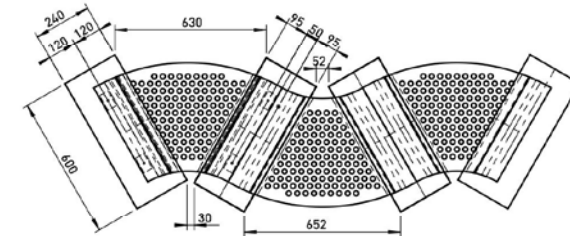
CHEMICKÁ KOTVA M8x165
CHEMICAL ANCHOR
CHEMISCHER ANKER

Ø 10
PRŮMÉR VRTÁNÍ
DRILL DIAMETER
BOHRDURCHMESSER

LSN210/215



SKLÁDÁNÍ OBLOUKOVÝCH LAVIČEK
ASSEMBLING THE ARCH BENCHES
ZUSAMMENSETZUNG VON DER GEBOGENEN PARKBÄNKE



TECHNICAL SPECIFICATIONS 3/5

LSN - SINUS



mmcite.com

Rozměry výrobků mají informativní charakter. Výrobce si vyhrazuje právo na změnu technické specifikace bez předchozího upozornění. Rozměry spodní stavby a způsob osazení výrobku jsou závazné. Rozteče kotvěv rozměrovat dle rozměrů dodaného výrobku.
All product sizes have an informative character. The Producer reserves the right to amend the technical specification at any time without previous warning. The size of foundation baseplate and the method of mounting of the product are imperative. Anchor spacing measure out by measurements of supplied product.
Die Abmessungen der Produkte sind informativ. Der Hersteller behält sich das Recht an Änderungen der technischen Spezifikationen vor, ohne vorher darauf hinzuweisen. Abmessungen der Fundamentierung - Unterbau und Art des Produkteinbaus sind verbindlich. Ankerabstand gemäß der gelieferten Produktabmessungen dimensionieren.