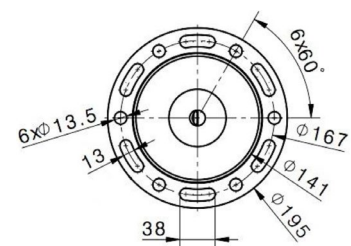
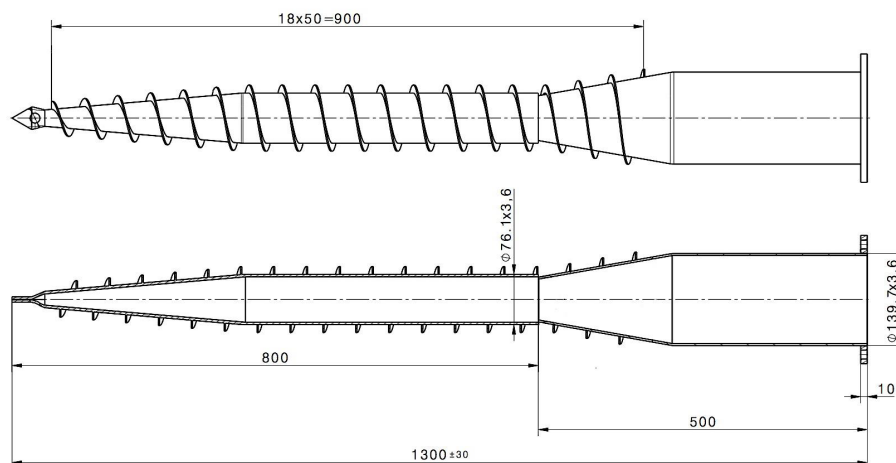
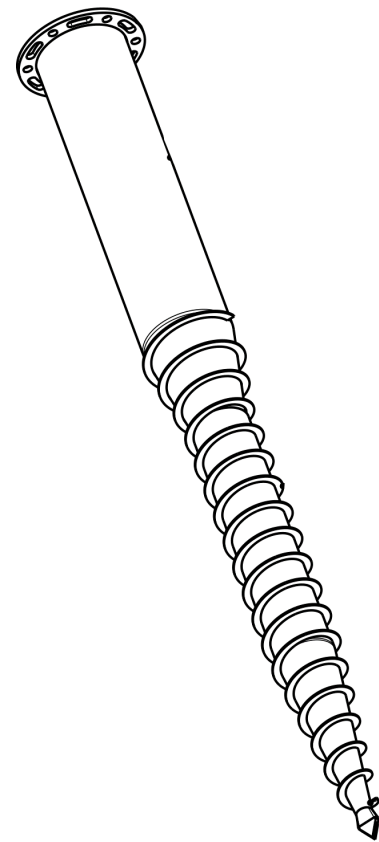


MODEL RIM 140 x 1300 W



Art. no:	56445
Weight:	18,9 kg
Dimensions:	Narrow Pipe: 76,1 x 3,6 x 750 mm Wide Pipe: 139,7 x 3,6 x 500 mm Flange: 220 x 10,0 mm
Materials:	Steel Type Pipe: S235 Steel Type Flange: S235 Surface treatment: Galvanized according to DIN EN ISO 1461
Installation:	Electric Ground Screw Driving Machine (Art.No: 12001) Pneumatic Ground Screw Driving Machine (Art.No: 12005) Hydraulic Ground Screw Driving Machine (Art.No: 12090)
Use:	Fixation of tubes, pipes, poles and columns.
Fixation:	Situational, contact your constructor.



Drawing description		
MODEL RIM 140 x 1300 W		
Date	Signed	Sheet number
12/2018	DVDE	1 of 2
Drawing number	Format	Document status
56445-V1	A4	DEF.

Products to combine:

-

FIRST BASE GROUND SCREWS
Patersweg 2, 5406 XJ
Uden, Holland.

info@firstbasegroundscrews.com
www.firstbasegroundscrews.com
0031 413 432 052