

## INSTALLATION MANUAL

# DANCOUNT DC2-3D COUNTER



### Included in the kit:

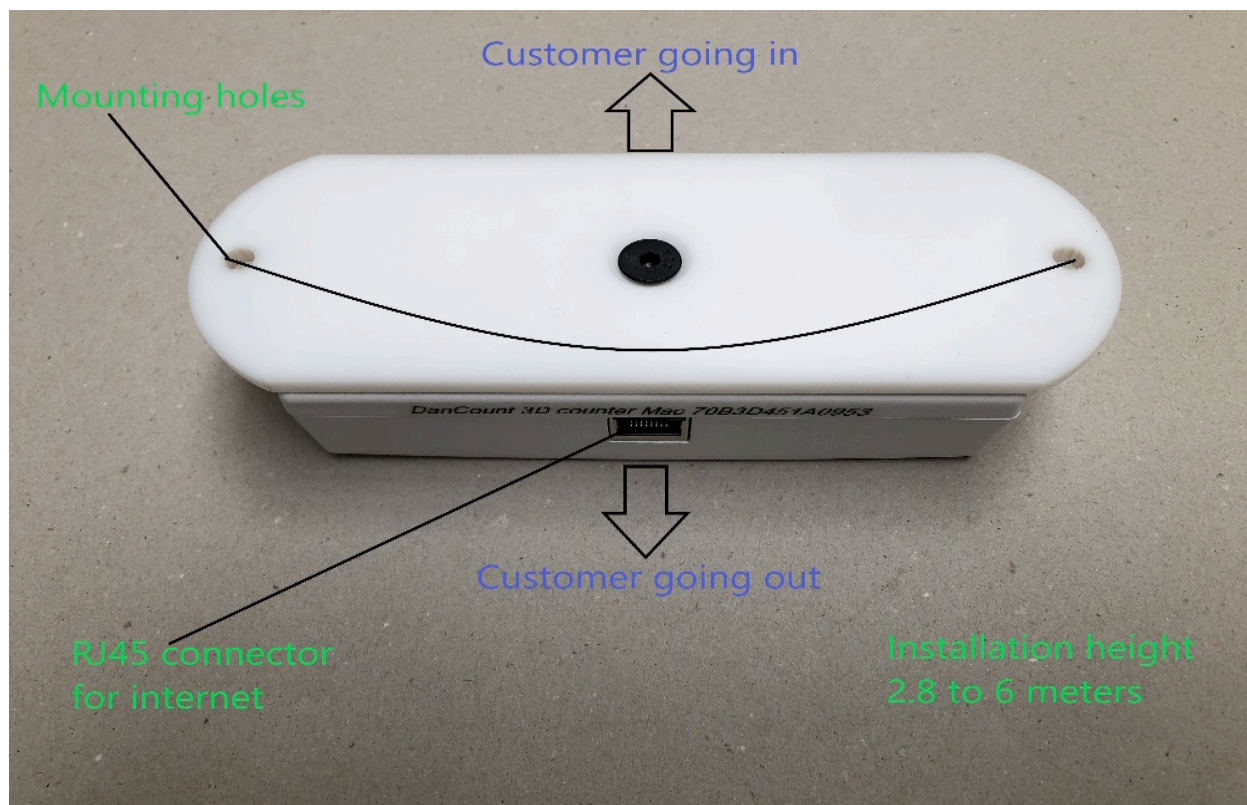
- 1 Dancount DC2-3D counter
- 1 PoE injector (only used if You do not use PoE switch.) - **DO NEVER USE BOTH**
- 1 Power supply for Poe injector
- 1 Activation form
- 1 Installation guide.

**Important:** Please remember to fill in the Activation Form and send it to: [Service@dancount.dk](mailto:Service@dancount.dk)  
This is the only way we can make sure, the counter is addressed to right customer and location.

## Finding a place to mount the counter to the ceiling

**Stores and boutiques:** Mount the counters above anti-theft gates. If there are no anti-theft gates, mount the counters right above the entrance with the distance of about 0.5m (1.6ft) from it.

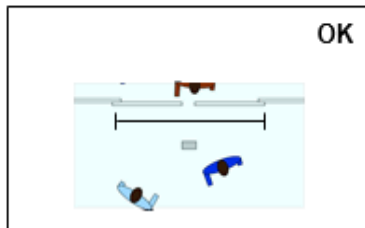
**Shopping malls:** Mount the counters where customer flow is distributed the most – above elevators, entrances, escalators, travellers, corridors, gateways.



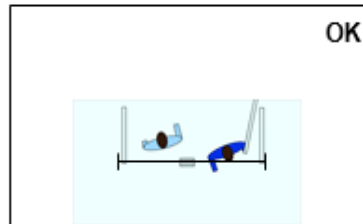
## Installation height for DanCount DC2-3D

Height over floor (cm)	250	300	350	400	500	550	600
Width of opening (cm)	225	300	375	475	625	725	800

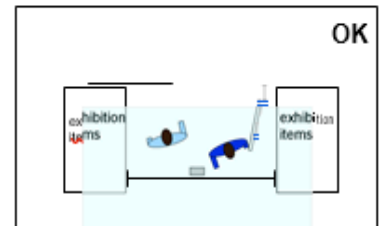
## Mounting the DanCount DC2-3D



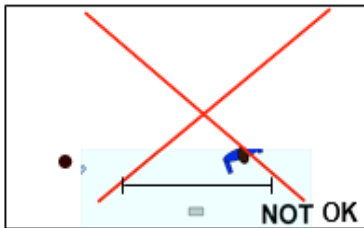
**Correct** - mount the counting unit near the door. Ensures that the counting is optimal.



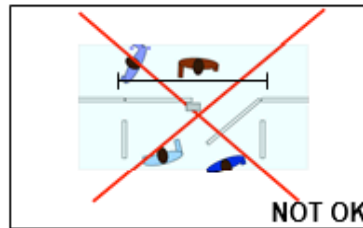
**Correct** - mount the counting unit away from moving objects like the door, but use stable objects to guide people under the counting unit.



**Correct** - if it is necessary to mount the counting unit away from the door, then limit the passage in a way which ensures that people will pass under the counting unit or use expansion units to cover the area.



**Wrong** - do not mount in such a way that people can enter or leave without passing the counting zone.



**Wrong** - do not mount in such a way that moving objects, like the door, will enter the counting zone.



**Wrong** - do not mount in such a way that people can enter or leave without passing the counting zone.

## Connection of Dancount DC2-3D to the internet

The counter is set up for DHCP, please follow this instruction:

### Connection without PoE switch:



### Connection with PoE switch:



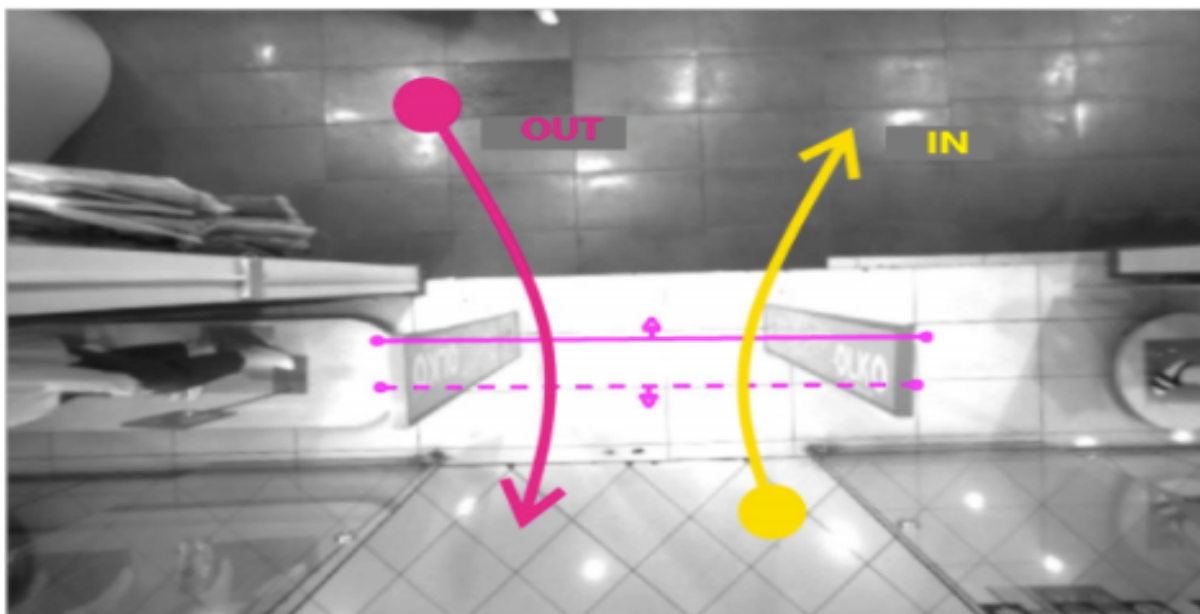
If PoE switch is used Dancount recommend IEE 802.3af Poe standard  
Remember to always use standard Path cablers ore cat5/cat6 cable

Shielded cable is **NOT** recommended.

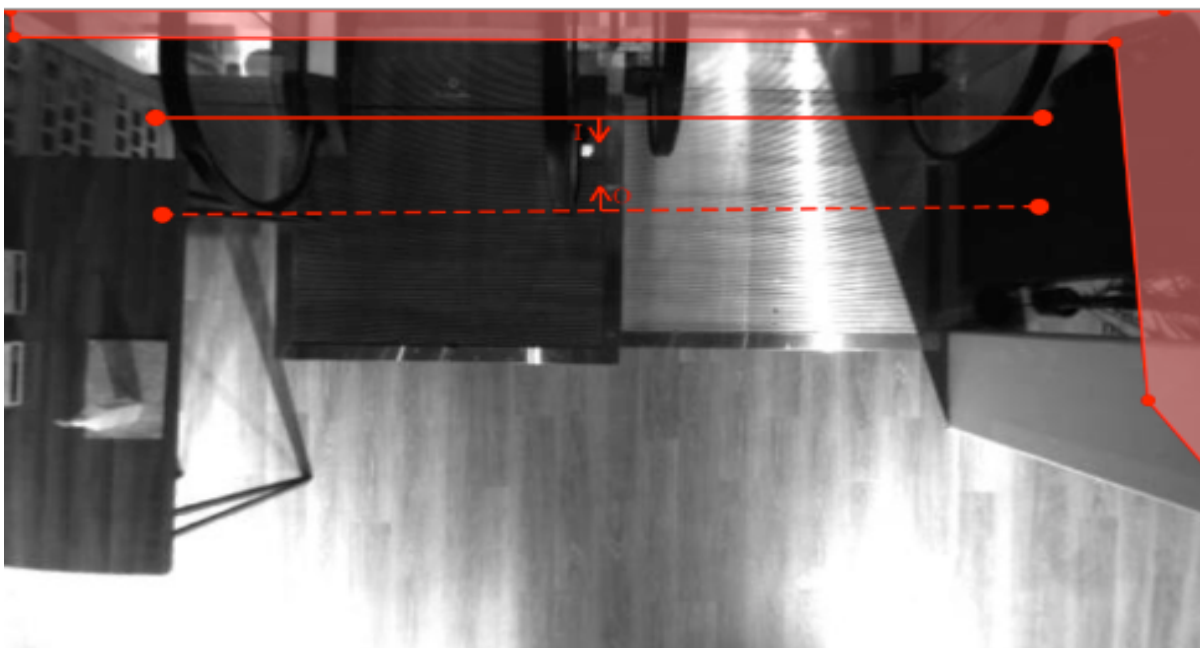
The counter is to be connected to the Ethernet with connection to the Internet and it is set to use DHCP to obtain network information. The counter uses port 80 for connection to server and do not need any special setup. When the counter is connected, and it gets Internet it will start communicating with Our server.

We also use port 80 for calibration off the counter, with will find please, as soon as we receive the **Activation form** from You.

Example on an installation where there are EAS gates



Example with escalators



If any question's regarding installation, please do not hesitate to call or mail Dancount Aps

Dancount Phone +45 7022 1234

Dancount Mail: [Service@dancount.dk](mailto:Service@dancount.dk)