

Platinum

HETEROGENEOUS VINYL

Irresistible
endurance



100%
phthalate-free

CONTENTS

- CREATE DISTINCT SPACES FROM FLOORS TO WALL 3

- GET MOVING IN A COMFORTABLE SPACE 5

- A CONCENTRATION OF TECHNOLOGIE 6

- IMPERVIOUS TO ALL ACTIVITY 7

- FULL PERFORMANCE COMPACT FLOORING 9

- DURABLE FLOORING, COMPULSORY DESIGN 11

- A FULL SET OF SOLUTIONS FOR ONE BUILDING 13

- FULL SOLUTION REFERENCES 14

- INSTALLING FLOORING TO ENSURE LONG LIFE 16

- A METHODOICAL APPROACH TO CLEANING 17

- PLATINIUM TENDER SPECIFICATION 18

- TECHNICAL DATA SHEET 19



PROTECTWALL
JUNGLE - INTENSE 069
UNI - DARK AQUA 135

PLATINIUM
PLAZZA - EGGPLANT 030
SNOW - DENIM 042

CREATE DISTINCT SPACES FROM FLOORS TO WALL

For busy places and buzzing spaces, nothing stands up to the incessant activity of exceptionally high traffic areas like Tarkett's Platinum range. Stains, scratches, indentations, the technically engineered heterogeneous vinyl flooring shrugs them all off. And like all Tarkett HE premium collections, it is 100% phthalate-free.

Particularly adapted to Healthcare and Education environments, the entire Platinum collection's robust longevity is thanks to the inlaid manufacturing process. Incorporated into the flooring itself, including the generous opaque wear layer of 1 mm on all references, the design has depth and remains extremely stable over time.

Design is complemented by serious performance for compact acoustic flooring. On thin concrete subfloors, Platinum absorbs up to 17dB of sound, provides excellent rollability and resists indentation.

Finally, the collection's durability is further enhanced by the 72 references available in eight design variations. Visually expressing Platinum's resistance, the profoundly matte vegetal and mineral nuances were inspired by the inherent strength found in the natural world.

DESIGN

 **140+**
flooring
references

 **SEAMLESS**
finish
Unique multicolour
welding rods

 Full Floor, Wall
& Stairs
coordination

PERFORMANCE

 **Excellent indentation to acoustic ratio**

NEW Acczent Platinum*
(compact acoustic)

0.03 mm / 9 dB

Tapiflex Platinum*
(acoustic)

0.07 mm / 17 dB

 **Extreme resistance**
· Inlaid product construction
· 1 mm opaque wear layer on all products

 **Smooth rolling for heavy loads**
20% improved rollability
on compact & acoustic profiles**

 **Practical hygiene & maintenance**
High-end PU treatment withstands wear and cleans conveniently

* resistance to indentation / sound impact reduction
** vs. former range



PROTECTWALL

JUNGLE - BEIGE 122
 UNI - LIGHT BEIGE 122
 UNI - SUPER WHITE 221

PLATINIUM
 PLAZZA - EGGPLANT 030
 SNOW - DENIM 042

GET MOVING IN A COMFORTABLE SPACE

A strong focus for Tarkett has always been to provide flooring that underscores a space's ambiance while also keeping a low profile. Air quality, movement and noise are prime areas of attention.

A pillar of Tarkett's sustainability strategy has always been designing and making products that contribute to the health and well-being of occupants.

In 2014, the company therefore decided to take the radical step of eliminating phthalates from its vinyl flooring production in Europe. We replaced it with phthalate-free plasticizers that are approved for food containers and toys for young children.

Today, with the launch of our 100% phthalate-free Excellence collection, we are proactively meeting consumer concerns. For creating healthy spaces where people live, work, play and learn, Tarkett is your partner.

 phthalate-free
100%

Breathe Easy

Good air quality is crucial when people spend 90% of their time indoors. As well as no phthalates, Platinum has very low levels of volatile organic compounds (VOCs).

 **VOCs**
10 µg/m³
 over 100 times lower than
 EU standard EN ISO 16000

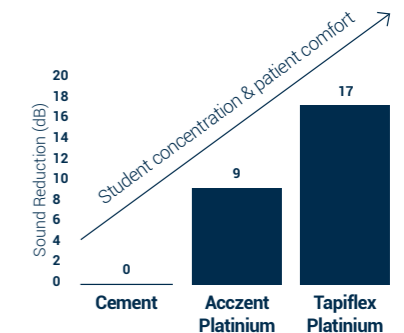
Soft Step

Building occupants benefit from Tarkett's expertise in shock absorption, usually found in sports flooring. Feet are gently cushioned throughout the whirlwind rush of daily activity.

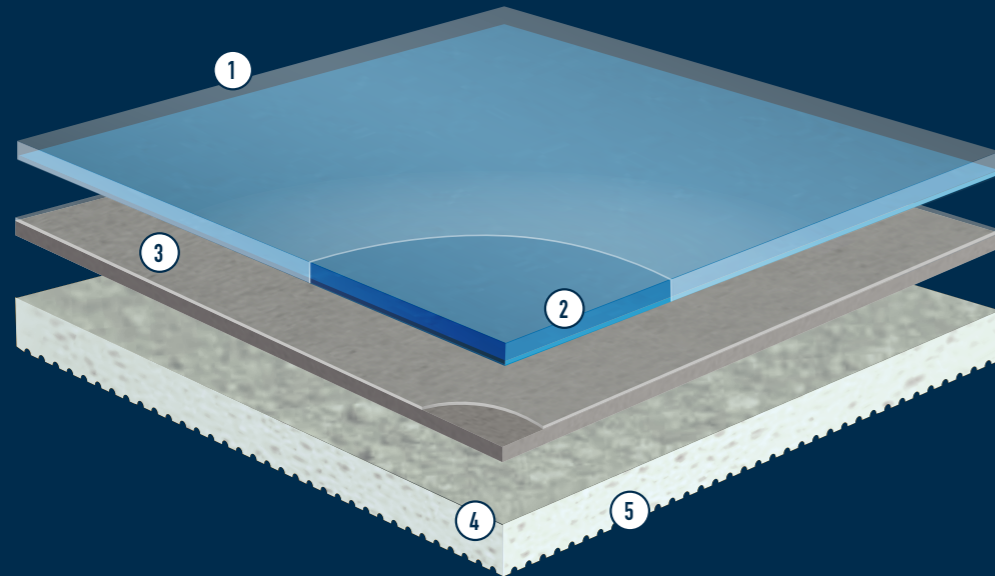


Attenuated Noise

By absorbing noise, Tarkett acoustic floorings take the edge off busy environments and encourage quiet interaction.



A CONCENTRATION OF TECHNOLOGY



1
PUR treatment is a photo-reticulated coating that is highly resistant to abrasion and scratches.

2
Opaque wear layer incorporates inlaid designs for higher perceived resistance

3
High density, non-woven glass fibre reinforcement for high dimensional stability and resistance to furniture

4
Solid homogeneous calendared sheet made of recycled vinyl for resistance to indentation and tearing

5
The Tapiflex version high density closed-cell foam backing for sound reduction, higher rollability and underfoot comfort

IMPERVIOUS TO ALL ACTIVITY

Platinum has been conceived to stand up to the non-stop busyness of fast environments. Over time and throughout daily events, its appearance remains fastidiously intact.



A 1mm wear layer is already robust protection. With the design incorporated into the 1mm-thick, opaque wear layer, shocks and scratches are virtually invisible.

1mm opaque wear layer
both acoustic (Tapiflex)
& compact (Acczent) references



The product's core of underlayer and fibreglass has been renewed and strengthened, greatly improving rolling performance.

20% easier rolling
(Tapiflex Platinum)
compared to previous Evolution range



Platinum's manufacturing process uses inlaid construction. Designs aren't printed, but are manufactured as part of the flooring itself. Indentation and tearing are minimal, and appearance remains extremely stable over time.

Tapiflex	Acczent
0.07_{mm}	0.03_{mm}
Resistance to indentation (best measured value)	



Tarkett's PUR surface treatment repels stains and abrasions, and facilitates cleaning. Stay immaculate and hygienic with minimal water and neutral detergents.

Up to **25%** reduction in the cost of maintenance and cleaning*
*Refer to Tarkett Life Cycle Cost (LCC) software

PROTECTWALL
 JUNGLE - GREY 072
 UNI - WHITE GREY 132

PLATINIUM
 SUGAR - CORAL 052
 MELT - CORAL 002

FULL PERFORMANCE COMPACT FLOORING

Accent Platinum smoothly executes the role of compact flooring made to resist wear in places of exceptionally high traffic while deftly absorbing noise to soften the buzz of activity.



Engineered Construction

For the most demanding requirements in high traffic areas, Accent Platinum answers ably, both in acoustics and resistance to indentation.



Vast Design Options

Available in a standard selection of colours, expand your options by ordering any of the Excellence collection's printed designs using the Accent Platinum inlaid manufacturing process for extreme durability.

Reduces sound by **9 dB**

0.03 mm indentation

Platinum
72 inlaid references

Excellence
127+ printed designs*

*option (600m² / 5 weeks leadtime)



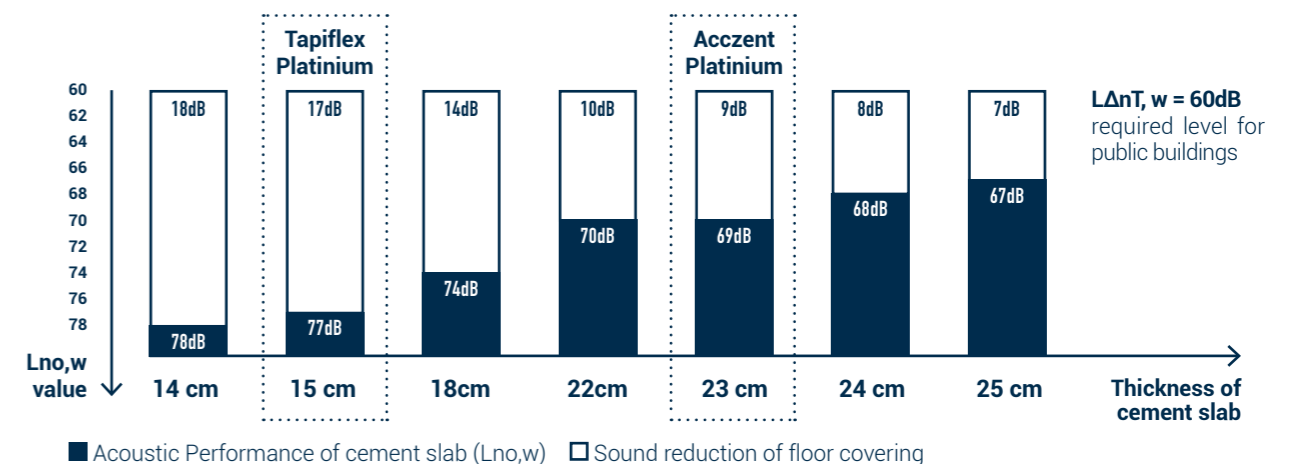
Concrete Noise Dampener

Accent Platinum is right at home on thin concrete subfloors, absorbing noise effectively and durably.

Calculating sound reduction ($L_{\Delta nT, w}$) in a building takes into account, among other criteria, the cement slab's acoustic performance ($L_{no, w}$) and the floor covering's impact sound reduction (ΔL_w).

Thicker cement slabs have better acoustic performance. To meet $L_{\Delta nT, w}$ requirements, which are 60dB in public buildings (according to local regulations) flooring therefore needs to reduce impact sound by a smaller amount.

As shown in the graph below, Accent Platinum, reaching 9dB in impact sound reduction, achieves the required 60dB on a 23cm-thick cement slab ($L_{no, w} = 69dB$). Tapiflex Platinum, reaching 17dB, reduces sound to the required 60dB on a 14cm-thick cement slab ($L_{no, w} = 77dB$).





PROTECTWALL
BRUSHED METAL - SILVER 054
UNI - SUPER WHITE 221

PLATINIUM
PLAZZA - BLACK 031
MELT - LIGHT GREY 009
UNI - BLACK 939

DURABLE FLOORING, COMPULSORY DESIGN

Above and beyond its long-lasting capabilities, Platinum is available in a select range of colours and patterns inspired by the natural world to distil strength and longevity within spaces.



Colour Your World

Choose from a number of colours and variations to add harmony and impact to busy places.

140+
references

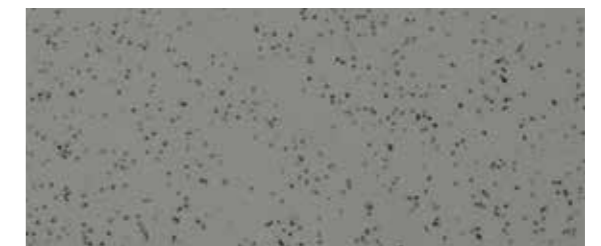
90%
new



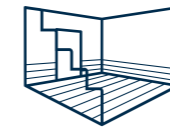
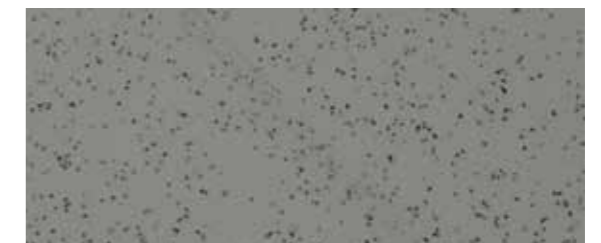
Seamless Finish

Unique multicolour welding rods give the most realistic and seamless aspect to all decors when installed.

Uni-coloured welding rod



Multi-coloured welding rod



Harmonised Design Concept

All patterns and colours can be mixed and matched with each of Tarkett's HE vinyl ranges:

**Accent and Tapiflex Excellence,
Tapiflex Stairs, ProtectWALL
& accessory collections**

Design story



The 72 profoundly matte references in Platinum's selection revolve around eight design variations. Choose from among false solids, dappled surfaces and colour gradients. In all, the designs emerge from below, as if gently surfacing to reach the light. Tones range from the vibrantly colourful and rich, to more subdued stone and vegetal hues, revitalising, calming, reassuring and connecting by turn.

SUGAR - Turquoise 057

PROTECTWALL

TRANSITION - BLUE GREEN 066

UNI - BRIGHT ICE BLUE 048

UNI - SUPER WHITE 2CR 061



PLATINIUM

MELT - TURQUOISE 005

MELT - PETROL 012

A FULL SET OF SOLUTIONS FOR ONE BUILDING

The Platinum collection has been designed to harmonise with Excellence, ProtectWALL, Tapiflex Stairs and accessory ranges. We have also created cross-over patterns that appear in all collections so that your architectural project displays consistent design throughout. Explore and install the full solution!

Wetroom Concept

For a watertight design solution
(Floor: 89 colour references
Wall: 77 colour references)

ProtectWALL

For maximum impact,
stain & scratch resistance
(50 colour references)

Accessibility Tactile Warning Strips

To ensure safety and guidance
(17 colour references)

Tapiflex Stairs

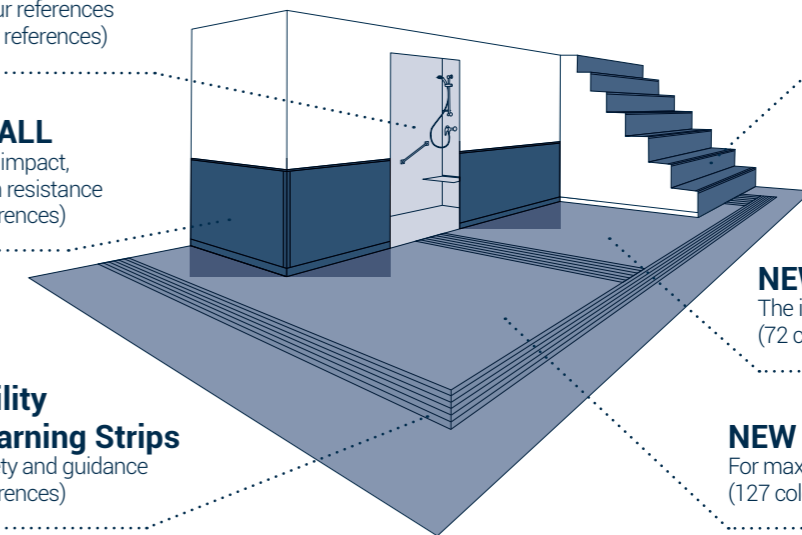
For increased safety
(22 colour references)

NEW Platinum

The ideal heavy traffic solution
(72 colour references)

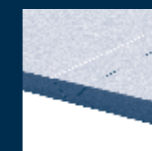
NEW Excellence

For maximum design possibilities
(127 colour references)



Accessories for a perfect finish

Optimize building orientation, navigation and safety with our dedicated accessories range.



WELDING RODS

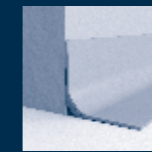
Secures the junction between 2 rolls of flooring or wall and floor coverings.



PRE-FORMED SKIRTING

Preformed set-in skirting made of PVC flooring, reinforced with polymere on backside. Welded to the floor covering and glued to the wall.

60/80/100 x 100/200 x 2400mm.
Available on request with all colours



PVC COVE FORMER

Forms a cove where floor covering rises up to the wall, creating a smooth angle under flooring for a perfect hygienic and watertight finish.



TRANSITION PROFILE

Used to join different floorings of the same or slightly different heights.

Order code:
Dark grey: 1452 000 / Light grey: 1452 001 /
White: 1452 002

ALSO AVAILABLE

- Accessibility items: tactile guide strips, tiles, studs
- Expansion joints
- Tarkoprotect

Please also ask for more information from your Tarkett rep.

				ACCZENT PLATINIUM 3/80	ACCZENT PLATINIUM 4/100	TAPIFLEX PLATINIUM 3/80	TAPIFLEX PLATINIUM 4/100	TAPIFLEX STAIRS	PROTECTWALL	MATCHING SKIRTINGS	MATCHING WR	
Design	Colour	NCS	LRV (%)	(compact acoustic 8dB)	(compact acoustic 8dB)						Unicolour	Multicolour
CANDY	Blue	S2050-R90B	23,6	25175063	25177063	25179063	25181063	UNI STAIRS medium grey 25172123	UNI bright extreme blue 26500042	KS 61-1411 038	1287172	26761063
	Coral	S1070-Y90R	21,3	25175064	25177064	25179064	25181064	UNI STAIRS medium grey 25172123	UNI bright red 26500045	KS 61-1411 019	1287893	26761065
	Green	S1050-G50Y	46,3	25175065	25177065	25179065	25181065	UNI STAIRS bright ice blue 25172122	JUNGLE tonic	KS 61-1411 036	1287592	26761066
	Grey	S2000-N	56,4	25175026	25177026	25179026	25181026	UNI STAIRS medium alu 25172118	UNI medium grey 26500044	KS 61-1411 011	1289316	26761068
	Orangeade	S2050-Y50R	31,8	25175066	25177066	25179066	25181066	UNI STAIRS bright orange 25172119	UNI light beige 26500122	KS 61-1411 018	1287894	26761064
	Yellow	S1050-Y10R	56,7	25175067	25177067	25179067	25181067	UNI STAIRS bright yellow 25172120	UNI bright yellow 26500037	KS 61-1411 028	1288351	26761067
MELT	Anis	S1050-G80Y	51,6	25175016	25177016	25179016	25181016	UNI STAIRS bright anis 25172121	UNI bright anis 26500039	KS 61-1411 036	1287896	-
	Beige	S4005-Y20R	29,5	25175020	25177020	25179020	25181020	UNI STAIRS dark beige 25172116	TISSE grey beige 26500057	KS 61-1411 027	1287889	-
	Black	S7502-B	6,5	25175008	25177008	25179008	25181008	UNI STAIRS grey 25172117	UNI super white 26500221	KS 61-1411 007	1291845	-
	Chalk	S0502-Y	88,8	25175000	25177000	25179000	25181000	UNI STAIRS medium grey 25172123	UNI white grey 26500132	KS 61-1411 012	1287486	-
	Coral	S1070-Y90R	19,3	25175002	25177002	25179002	25181002	UNI STAIRS grey 25172117	UNI bright red 26500045	KS 61-1411 019	1287893	-
	Dark Blue	S4040-R80B	11,7	25175006	25177006	25179006	25181006	UNI STAIRS medium grey 25172123	UNI bright extreme blue 26500042	KS 61-1411 039	1287307	-
	Denim	S5020-B	17,0	25175011	25177011	25179011	25181011	UNI STAIRS medium grey 25172123	TISSE blue 26500010	KS 61-1411 042	1287890	-
	Eggplant	S5020-R20B	11,4	25175007	25177007	25179007	25181007	UNI STAIRS dark beige 25172116	UNI intense plum 26500051	KS 61-1411 029	1287649	-
	Lagoon	S1030-B50G	51,7	25175013	25177013	25179013	25181013	UNI STAIRS bright ice blue 25172122	UNI bright ice blue 26500048	KS 61-1411 035	1287897	-
	Light Grey	S2002-G	52,6	25175009	25177009	25179009	25181009	UNI STAIRS medium grey 25172123	UNI medium grey 26500044	KS 61-1411 011	1287630	-
	Lime	S2030-G90Y	43,2	25175004	25177004	25179004	25181004	UNI STAIRS dark beige 25172116	TRANSITION yellow green 26500067	KS 61-1411 012	1287869	-
	Mastic	S3010-G90Y	45,9	25175019	25177019	25179019	25181019	UNI STAIRS dark beige 25172116	TISSE grey beige 26500057	KS 61-1411 027	1287892	-
	Medium Grey	S4500-N	29,0	25175010	25177010	25179010	25181010	FUSION LINES STAIRS dark grey 25171015	UNI warm grey 26500043	KS 61-1411 010	1292457	-
	Mustard	S2040-Y10R	37,4	25175017	25177017	25179017	25181017	UNI STAIRS medium alu 25172118	UNI dark grey 26500041	KS 61-1411 009	1287884	-
	Petrol	S4020-B30G	20,6	25175012	25177012	25179012	25181012	UNI STAIRS bright ice blue 25172122	UNI dark aqua 26500135	KS 61-1411 044	1287895	-
	Pink	S2050-R20B	21,1	25175001	25177001	25179001	25181001	UNI STAIRS medium grey 25172123	UNI white grey 26500132	KS 61-1411 012	1287874	-
	Terracotta	S2050-Y70R	27,0	25175018	25177018	25179018	25181018	UNI STAIRS dark beige 25172116	UNI light beige 26500122	KS 61-1411 027	1287891	-
	Turquoise	S4040-B30G	17,4	25175005	25177005	25179005	25181005	NEON STAIRS bright ice blue 25172029	UNI bright dark turquoise 26500040	KS 61-1411 044	1287888	-
Yellow	S1050-Y10R	49,8	25175003	25177003	25179003	25181003	UNI STAIRS bright yellow 25172120	UNI bright yellow 26500037	KS 61-1411 009	1287579	-	
PLAZZA	Beige	S1502-G50Y	60,5	25176023	25178023	25180023	25182023	UNI STAIRS medium alu 25172118	UNI medium grey 26500044	KS 61-1411 011	1287846	26761069
	Black	S1502-G50Y	59,7	25176031	25178031	25180031	25182031	UNI STAIRS medium alu 25172118	UNI medium grey 26500044	KS 61-1411 011	1287846	26761070
	Coral	S1502-G50Y	59,2	25176025	25178025	25180025	25182025	UNI STAIRS medium alu 25172118	UNI medium grey 26500044	KS 61-1411 011	1287846	26761071
	Dark Blue	S1502-G50Y	57,8	25176029	25178029	25180029	25182029	UNI STAIRS medium alu 25172118	UNI medium grey 26500044	KS 61-1411 011	1292394	26761072
	Eggplant	S1502-G50Y	57,6	25176030	25178030	25180030	25182030	UNI STAIRS medium alu 25172118	UNI medium grey 26500044	KS 61-1411 011	1287846	26761073
	Lime	S1502-G50Y	57,8	25176027	25178027	25180027	25182027	UNI STAIRS medium alu 25172118	UNI medium grey 26500044	KS 61-1411 011	1287846	26761074
	Pink	S1502-G50Y	57,0	25176024	25178024	25180024	25182024	UNI STAIRS medium alu 25172118	UNI medium grey 26500044	KS 61-1411 011	1287846	26761075
	Turquoise	S1502-G50Y	57,9	25176028	25178028	25180028	25182028	UNI STAIRS medium alu 25172118	UNI medium grey 26500044	KS 61-1411 011	1287846	26761076
	Yellow	S1502-G50Y	59,0	25176026	25178026	25180026	25182026	UNI STAIRS medium alu 25172118	UNI medium grey 26500044	KS 61-1411 011	1287846	26761077
	RUBBER	Beige	S1502-G50Y	61,4	25176033	25178033	25180033	25182033	UNI STAIRS dark beige 25172116	UNI medium grey 26500044	KS 61-1411 012	1287837
Black		S1502-G50Y	58,4	25176039	25178039	25180039	25182039	UNI STAIRS grey 25172117	UNI medium grey 26500044	KS 61-1411 012	1287837	26761079
Coral		S1502-G50Y	60,6	25176035	25178035	25180035	25182035	UNI STAIRS bright orange 25172119	UNI medium grey 26500044	KS 61-1411 012	1287837	26761080
Lime		S1502-G50Y	61,4	25176037	25178037	25180037	25182037	UNI STAIRS bright anis 25172121	UNI intense olive 26500047	KS 61-1411 012	1287837	26761081
Pink		S1502-G50Y	61,6	25176034	25178034	25180034	25182034	UNI STAIRS medium alu 25172118	UNI medium grey 26500044	KS 61-1411 012	1287837	26761082
Turquoise		S1502-G50Y	61,0	25176038	25178038	25180038	25182038	UNI STAIRS medium alu 25172118	UNI medium grey 26500044	KS 61-1411 012	1287837	26761083
Yellow		S1502-G50Y	61,1	25176036	25178036	25180036	25182036	UNI STAIRS bright yellow 25172120	UNI bright yellow 26500037	KS 61-1411 012	1287837	26761084
SALT & PEPPER	Dark Grey	S5500-N	22,3	25176008	25178008	25180008	25182008	UNI STAIRS grey 25172117	UNI warm grey 26500043	KS 61-1411 009	1287525	26761086
	Graphite	S6502-B	13,5	25176014	25178014	25180014	25182014	UNI STAIRS grey 25172117	UNI dark grey 26500041	KS 61-1411 009	1287836	26761089
	Grege	S2020-Y	56,1	25176015	25178015	25180015	25182015	OAK TREE STAIRS beige 25171030	TISSE warm grey 26500005	KS 61-1411 027	1287774	26761090
	Light Grey	S2000-N	57,8	25176010	25178010	25180010	25182010	UNI STAIRS medium grey 25172123	UNI medium grey 26500044	KS 61-1411 011	1287202	26761088
	Medium Grey	S3500-N	39,6	25176009	25178009	25180009	25182009	UNI STAIRS medium alu 25172118	UNI medium grey 26500044	KS 61-1411 010	1287459	26761087
	White	S0907-Y10R	69,5	25176007	25178007	25180007	25182007	TISSAGE STAIRS soft grege 25171032	TISSE warm grey 26500005	KS 61-1411 012	1288232	26761085
	SNOW	Anis	S1050-G80Y	52,8	25176045	25178045	25180045	25182045	UNI STAIRS bright anis 25172121	UNI bright anis 26500039	KS 61-1411 036	1287896
Chalk		S0502-Y	89,2	25176055	25178055	25180055	25182055	UNI STAIRS medium alu 25172118	UNI white grey 26500132	KS 61-1411 012	1287486	26761096
Denim		S5020-B	17,1	25176042	25178042	25180042	25182042	UNI STAIRS medium grey 25172123	TISSE blue 26500010	KS 61-1411 041	1287890	26761097
Lagoon		S1030-B50G	50,7	25176044	25178044	25180044	25182044	UNI STAIRS bright ice blue 25172122	UNI bright ice blue 26500048	KS 61-1411 044	1287897	26761098
Light Grey		S2002-G	54,5	25176040	25178040	25180040	25182040	UNI STAIRS medium grey 25172123	UNI medium grey 26500044	KS 61-1411 011	1289316	26761095
Mastic		S2010-G90Y	45,4	25176048	25178048	25180048	25182048	UNI STAIRS dark beige 25172116	TISSE grey beige 26500057	KS 61-1411 027	1287892	26761096
Medium Grey		S4000-N	31,3	25176041	25178041	25180041	25182041	UNI STAIRS medium grey 25172123	UNI warm grey 26500043	KS 61-1411 010	1292457	26761097
Mustard		S2040-Y10R	37,6	25176046	25178046	25180046	25182046	TISSAGE STAIRS soft grege 25171032	UNI white grey 26500132	KS 61-1411 012	1287884	26761098
Petrol		S5020-B30G	19,7	25176043	25178043	25180043	25182043	UNI STAIRS bright ice blue 25172122	UNI green celadon 26500038	KS 61-1411 035	1287895	26761099
Terracotta		S2050-Y70R	27,1	25176047	25178047	25180047	25182047	UNI STAIRS dark beige 25172116	UNI white grey 26500132	KS 61-1411 012	1287891	26761102
SPICE & CANDY		Dark Grey	S6502-B	14,5	25176056	25178056	25180056	25182056	UNI STAIRS grey 25172117	UNI warm grey 26500043	KS 61-1411 009	1287836
	Light Grey	S3500-N	55,9	25176049	25178049	25180049	25182049	UNI STAIRS medium alu 25172118	UNI medium grey 26500044	KS 61-1411 011	1287828	26761103
SUGAR	Beige	S0502-Y	87,3	25176050	25178050	25180050	25182050	UNI STAIRS dark beige 25172116	CONCRETE chalk 26500059	KS 61-1411 012	1287486	26761104
	Black	S0502-Y	72,2	25176058	25178058	25180058	25182058	UNI STAIRS grey 25172117	UNI super white 26500221	KS 61-1411 012	1287486	26761105
	Coral	S0502-Y	76,4	25176052	25178052	25180052	25182052	UNI STAIRS bright orange 25172119	UNI bright red 26500045	KS 61-1411 012	1287486	26761106
	Lime	S0502-Y	85,7	25176054	25178054	25180054	25182054	UNI STAIRS bright anis 25172121	UNI intense olive 26500047	KS 61-1411 012	1287486	26761107
	Pink	S0502-Y	87,4	25176051	25178051	25180051	25182051	UNI STAIRS medium alu 25172118	UNI intense plum 26500051	KS 61-1411 012	1287486	26761108
	Turquoise	S0502-Y	83,7	25176057	25178057	25180057	25182057	UNI STAIRS bright ice blue 25172122	UNI bright turquoise 26500046	KS 61-1411 012	1287486	26761109
	Yellow	S0502-Y	88,4	25176053	25178053	25180053	25182053	UNI STAIRS bright yellow 25172120	UNI bright yellow 26500037	KS 61-1411 012	1287486	26761109
UNI	Black	S7502-B	6,8	25175939	25177939	25179939	25181939	UNI STAIRS grey 25172117	UNI super white 26500221	KS 61-1411 007	1291845	-
	Dark Beige	S4005-Y20R	30,7	25175918	25177918	25179918	25181918	UNI STAIRS grey 25172117	TRANSITION grey 2650006			

INSTALLING FLOORING TO ENSURE LONG LIFE

Tarkett has a wide variety of techniques and tips to ensure perfect installation and keep your flooring in good condition for years to come.

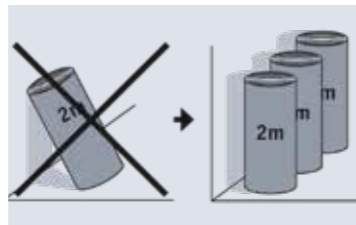
STEPS IN INSTALLING

1. Subfloor control



- The subfloor must be sound, hard, flat, clean and free from all types of marks, debris & residues, and not exposed to humidity.
- Absorbency must be checked and when needed, treated with a primer to have moderately absorbent subfloor.
- Refer to local standards for detailed rules and control methods.
- Stop underfloor heating for minimum 48h before installation and maintain the temperature in the room with an alternative heating source.

2. Before installation



- Store 2m large rolls vertically in storage area. Larger rolls should be stored horizontally.
- Let the flooring acclimatize at least 24h before laying and cut sheets should be relaxed another 24h, both at room temperature.
- Define your layout to ensure whenever possible that joins do not coincide with doorways and main traffic lanes.
- If the room is square, the sheets should run parallel to the incoming light. In long, narrow rooms the sheets can be installed along the length of the room.

3. Rolls installation



- Butt joint when edges are straight, if not, overlap the edges and trim the two sheets simultaneously (double cut method).
- Fold the first half of the sheets.
- Apply acrylic adhesive with a spatula (TKB A1 for compact, TKB A2 for acoustic) - refer to adhesive manufacturer's instruction for waiting time.
- Fold back the first half of the flooring into the adhesive and press.
- Repeat this operation on the other half
- Excess of material close to walls and obstacles can be trimmed/flushed (freehand cut).
- Use a heavy roller on the whole surface to ensure final bonding.

4. Hot welding



- Wait minimum 24h after installation.
- Hot weld with 4mm PVC welding rod: groove (2/3 of the compact layer) and weld at approx. 400°C with a hot speed nozzle.
- Trim the welding rod in 2 steps (immediately and after 5 minutes) with a Mozart knife.

5. After installation

- Clean working area from all adhesive marks, stains and dust.
- Prevent soiling by protecting the area.
- Open the area to normal traffic 48 hours after installation and move furnitures after 72 hours.

For more detailed explanations, or specific installation methods (cove forming, tiles installation, Acczent Unik loose-lay installation), please refer to full installation notice. Please contact your local representative for any questions. Tarkett accepts no liability for adhesives and levelling compounds used, including those recommended.

A METHODOLOGICAL APPROACH TO CLEANING

Tarkett's PUR surface treatment facilitates cleaning and decreases the need for water and solvents, reducing environmental impact. Regular and attentive cleaning maintains flooring in between periodic deep-clean buffing sessions.

General Advice

- Clean the floorcovering regularly, as this is more cost-effective and hygienic than occasional heavy-duty cleaning.
- Black rubber wheels and rubber feet can discolour the floorcovering. All chair and table legs should have good quality floor protectors. Felt pads are not recommended in commercial interiors. Hard plastic is preferred.
- Install doormats at the entrance of the buildings to catch humidity, dirt, dust etc. They must be at least three strides long (approx. 1.5 m).
- Always follow manufacturers' recommendations (detergent, cleaning machine...).

SETTING IN TRAFFIC	ACTIONS	INSTRUCTIONS
	1. Removing dust and gravel	<ul style="list-style-type: none"> - Dry mopping. - Vacuum cleaning.
	2. Cleaning	<ul style="list-style-type: none"> - Mechanical cleaning with scrubbing machine - red pad, medium speed - and water vacuuming, or combined machine. - Use neutral detergent (pH 6/8) or alkaline detergent (pH 8/12) in case of heavy soiling. - If an alkaline detergent (pH 8/12) is used, the flooring should be rinsed with water and water vacuumed.
	3. Stain removal	<ul style="list-style-type: none"> - A detergent should be used to remove work-site stains (glue, paint...) according to the nature of the stain. - Do not use abrasive pads.
DAILY CLEANING	ACTIONS	INSTRUCTIONS
	1. Removing dust and gravel	<ul style="list-style-type: none"> - Dry mopping. - Vacuum cleaning.
	2. Cleaning (if and where it's necessary)	<ul style="list-style-type: none"> - With flat or micro fibre mop, impregnated or not. or - With a combined machine (red pad, medium speed). - Use neutral detergent (pH 6/8).
	3. Stain removal	<ul style="list-style-type: none"> - For stubborn stains on the floor, use an alkaline detergent (pH 9/10) dilution according manufacturer instruction, let it work during 1 minute and sweep with a white clean cloth.
PERIODICAL CLEANING	ACTIONS	INSTRUCTIONS
	1. Light soiling	<ul style="list-style-type: none"> - Machine cleaning: use a scrubbing machine fitted out with soft white brushes or red pads at medium speed - Use detergent neutral or alkaline (pH 7/9)
	2. Heavy soiling	<ul style="list-style-type: none"> - Apply a cleaning solution (pH 10-11, after dilution) to the flooring and allow to act for 5-10 min. - Machine cleaning: use a scrubbing machine fitted out with soft white brushes or red pads at medium speed. - Vacuum up the soiled water immediately. - Rinse with clean water and allow the floor to dry.
	3. Stain removal	<ul style="list-style-type: none"> - For stubborn stains on the floor, use an alkaline detergent (pH 9/10) dilution according manufacturer instruction, let it work during 1 minute and sweep with a white clean cloth.

PLATINIUM TENDER SPECIFICATION

Tapiflex Platinum 100

The selected flooring similar to Tapiflex Platinum 100 belongs to the acoustic vinyl floors category under the EN standard 649, available in 2m wide sheet with a Group T wear rating.

The product formulation does not contain phthalate based plasticizer. It is built on a calendared backing layer made of recycled vinyl flooring material. It contains over 29% of recycled material.

The product is **built inlaid** with a high density foam backing reinforced with glass fibre and a high quality printed design. **The opaque wear layer of 1,02mm does not contain fillers** and is reinforced with a UV photo crosslinked polyurethane including particles of alumina TopClean XP™ treatment, which permanently suppresses any wax and regenerating polish spray maintenance operations.

It has an **acoustic performance of 17dB, an acoustical improvement of Class C and a static indentation resistance $\leq 0,09\text{mm}$.**

It offers a dimensional stability $\leq 0,10\%$ according to EN ISO 23999 standard. Its gloss rate is $\leq 5\%$ and it can be installed with **multicolour welding rods to ensure seamless finish.**

Its emission rate of volatile organic compounds in air is very low, measured after 28 days according to EN 16516 standard. Close to zero emission (quantification limit), **TVOC, TSVOC and formaldehyde emissions are below than $10 \mu\text{g}/\text{m}^3$.**

It is free of formaldehyde and **100% REACH compliant.**

It is 100% recyclable and installation off-cuts can be collected and recycled in new products through the Tarkett ReStart® program.

Tapiflex Platinum comes with a **10 Year Warranty.**

Acczent Platinum 100

The selected flooring similar to Acczent Platinum 100 belongs to the compact vinyl floors category under the ISO standard 10582, available in 2m wide sheet with a Binder Content of Type I.

The product formulation does not contain phthalate based plasticizer. It is built on a calendared backing layer made of recycled vinyl flooring material. It contains over 21% of recycled material.

The product is **built inlaid**, the opaque wear layer of 1,02mm does not contain fillers and is reinforced with a UV photo crosslinked polyurethane including particles of alumina TopClean XP™ treatment, which permanently suppresses any wax and regenerating polish spray maintenance operations.

It has an **acoustic performance of 9dB, an Acoustical improvement of Class B and a static indentation resistance $\leq 0,04\text{mm}$.**

It offers a dimensional stability $\leq 0,10\%$ according to EN ISO 23999 standard. Its gloss rate is $\leq 5\%$ and it can be installed **with multicolour welding rods to ensure seamless finish.**

Its emission rate of volatile organic compounds in air is very low, measured after 28 days according to EN 16516 standard. Close to zero emission (quantification limit), **TVOC, TSVOC and formaldehyde emissions are below than $10 \mu\text{g}/\text{m}^3$.**

It is free of formaldehyde and **100% REACH compliant.**

It is 100% recyclable and installation off-cuts can be collected and recycled in new products through the Tarkett ReStart® program.

Acczent Platinum comes with a **10 Year Warranty.**

More excellent reasons to choose Tarkett Platinum

- ✓ 100% Phthalate Free
- ✓ Zero formaldehyde
- ✓ 100% recyclable
- ✓ Test reports and certificates available upon request
- ✓ Optimal indoor air quality
- ✓ TVOC $< 10 \mu\text{g}/\text{m}^3$ after 28 days
- ✓ FloorScore® certified
- ✓ ISO 14001 certified production site
- ✓ REACH Compliant and CE Marking

TECHNICAL DATA SHEET

SPECIFICATION DATA

The Platinum range, with its in-laid construction available in 72 decors, offers one of the most performing heavy-traffic heterogeneous vinyl solution on the market. The range is 100% phthalate-free and the VOC air emission rate is very low; less than $10 \mu\text{g}/\text{m}^3$. The range includes an acoustic solution (17dB) and a compact acoustic solution (9dB) in roll format, both with a 10 year warranty.

TECHNICAL DATA	STANDARD	TAPIFLEX PLATINIUM 100 (SHEET)	ACCZENT PLATINIUM 100 (SHEET)
CLASSIFICATION			
Classification	EN 651	Heterogeneous Acoustic Vinyl	
	EN ISO 10582	-	Heterogeneous Compact Vinyl
	EN ISO 10874	34	34-43
Wear group	EN 651	T	-
Wear layer binder content	EN ISO 10582	-	Type I
TECHNICAL CHARACTERISTICS			
Total thickness	EN ISO 24346	3.10 mm	2.45 mm
Total weight	EN ISO 23997	3250 g/m ²	3200 g/m ²
Wear layer thickness	EN ISO 24340	1.02 mm	1.02 mm
Form of delivery	EN ISO 24341 (rolls)	approx. 23 running metres x 200 cm	approx. 23 running metres x 200 cm
PERFORMANCES FOR CE MARKING REQUIREMENTS (EN 14041)			
Declaration of Performance	EN 14041	0170-0201-DoP-2017-11	0170-0200-DoP-2017-11
Reaction to fire	EN 13501-1	B _{fl} -s1 glued over any A2 _{fl} or A1 _{fl} substrate (concrete) C _{fl} -s1 glued over any derivate wood substrate	B _{fl} -s1 glued over any A2 _{fl} or A1 _{fl} substrate (concrete) B _{fl} -s1 glued over any derivate wood substrate
Electrostatic properties	EN 1815	$\leq 2,0 \text{ kV}$	$\leq 2,0 \text{ kV}$
Thermal resistance	EN ISO 10456	0.02 m ² K/W	0.02 m ² K/W
Slip resistance	EN 13893	$\mu \geq 0,3$	$\mu \geq 0,3$
TECHNICAL PERFORMANCES			
Residual indentation	EN ISO 24343-1	Required value: $\leq 0.20 \text{ mm}$ Best measured value*: 0.07 mm Average measured value*: 0.09 mm	Required value: $\leq 0.10 \text{ mm}$ Best measured value*: 0.03 mm Average measured value*: 0.04 mm
Impact sound reduction	NF EN ISO 717 / 2	$\Delta L_w = 17 \text{ dB}$	$\Delta L_w = 9 \text{ dB}$
Acoustical improvement	NF S31-074	$L_{n,e,w} < 65 \text{ dB}$ - Class A	$L_{n,e,w} < 85 \text{ dB}$ - Class B
Slip resistance ⁽¹⁾	DIN 51130	R9	R9
Furniture leg	EN 424	No damage	No damage
Castor chair	ISO 4918	No damage	No damage
Curl resultant to heat	EN ISO 23999	$\leq 8 \text{ mm}$	$\leq 8 \text{ mm}$
Light fastness	EN ISO 105-B02	≥ 6	≥ 6
Dimensional stability	EN ISO 23999	$< 0.10\%$	$< 0.10\%$
Chemical resistance	EN ISO 26987	Not affected	Not affected
Underfloor heating		Suitable	Suitable
ENVIRONMENTAL PERFORMANCES			
Total VOC emissions	ISO 16000-9	$\leq 10 \mu\text{g}/\text{m}^3$ (after 28 days)	$\leq 10 \mu\text{g}/\text{m}^3$ (after 28 days)
Formaldehyde	ISO 16000-3	$< 10 \mu\text{g}/\text{m}^3$ (after 28 days)	$< 10 \mu\text{g}/\text{m}^3$ (after 28 days)
COLOURS			
		72	72

The above information is subject to modification for the benefit of further improvement. (12/17). *For information - not binding.

⁽¹⁾Please note that slip resistance may be impacted by usage and cleaning operations.

According to the European Regulation N° 305/2011 for CE Marking, the Declarations of Performance are available on our website www.tarkett.com

Tarkett's instructions regarding installation, cleaning and maintenance should be observed. Please contact Tarkett at the address shown for these instructions.

CUSTOMS TARIFF : 4820 5000 00



Disclaimer : Please note that products in photos are installed for creative purposes and not according to technical specifications. Please refer to Tarkett installation instructions for guidance.

