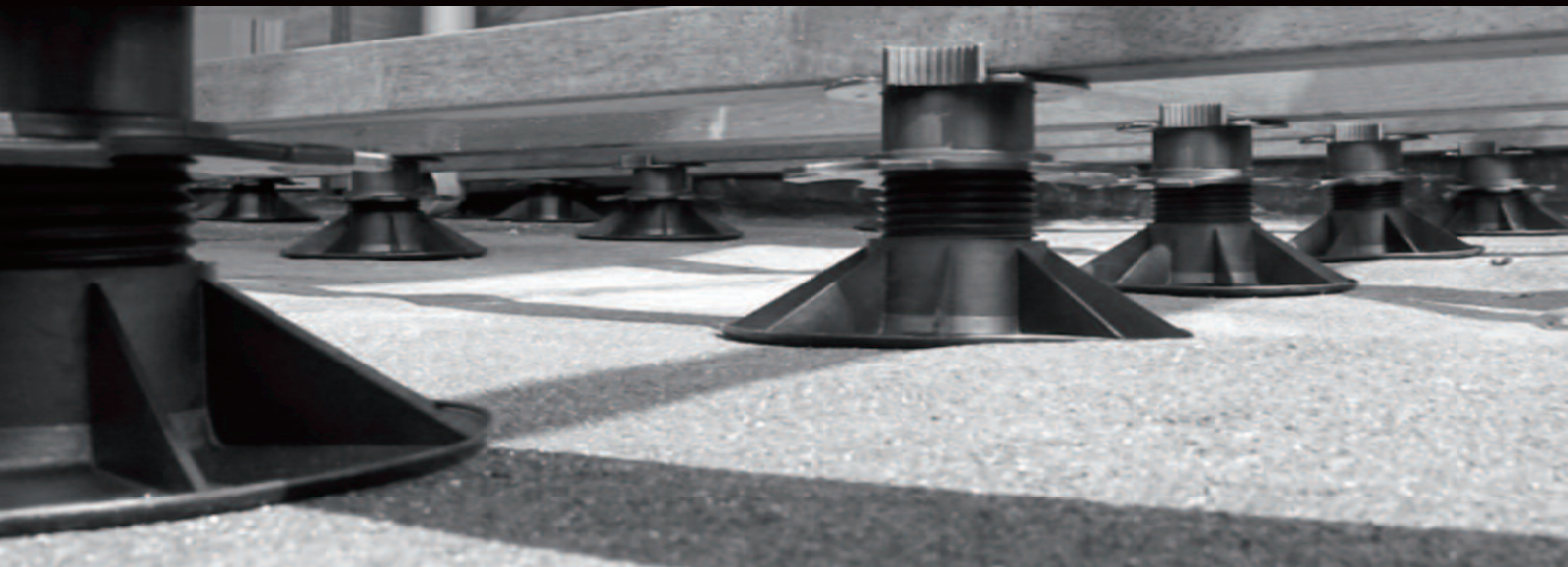


# **SOLIDOR**

**CUSTOM MADE RUBBER PRODUCTS**



**SOLIDOR Supports for terraces  
they make the difference!**





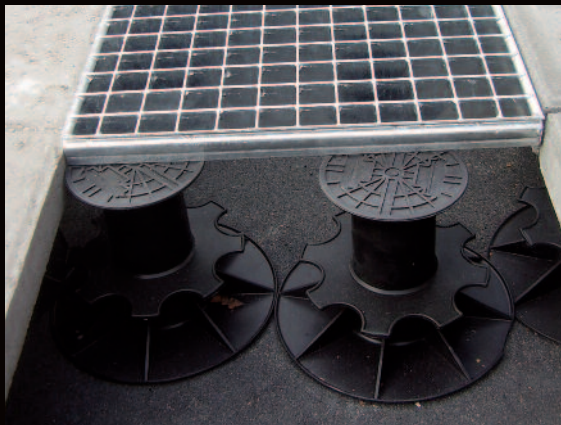
Adjustable support for tiles  
with extension piece F35



Adjustable support for wooden terraces



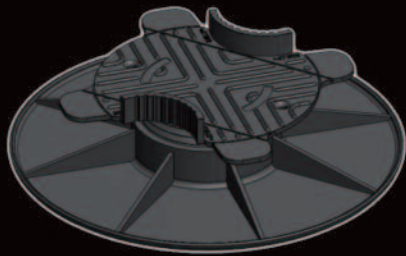
Adjustable support for wooden terraces



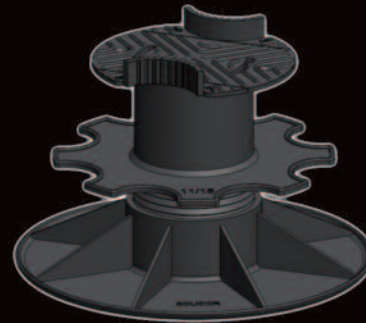
Adjustable support for metal grates



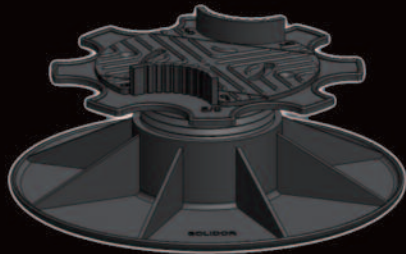




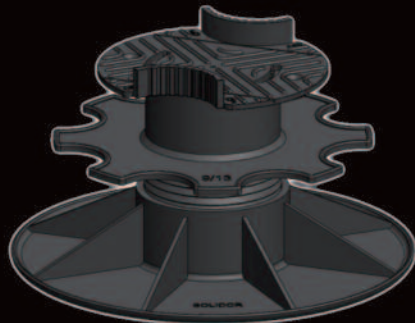
PV3/5/CP+



PV11/15+CP+



PV5/9+CP+



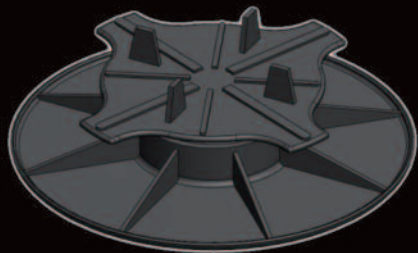
PV9/13+CP+



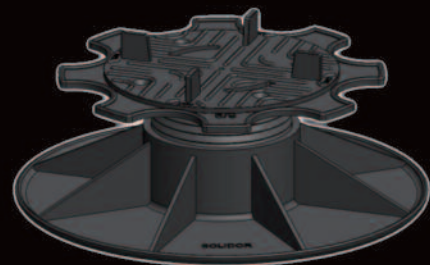
PV15/19+CP+



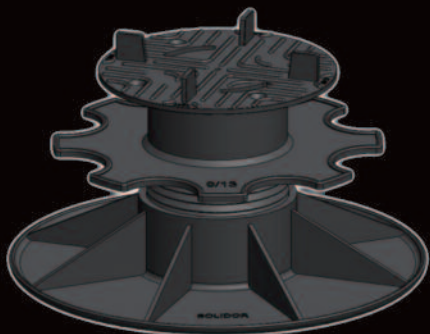




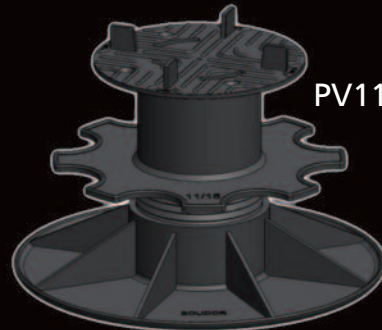
PV3/5/C3/4T



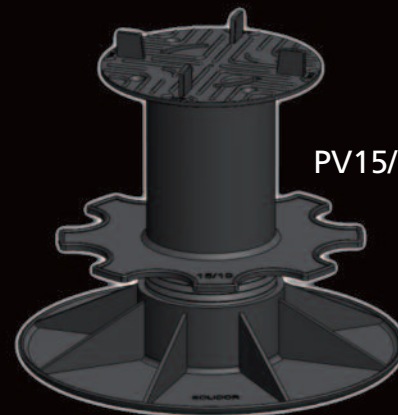
PV5/9+C3/4T



PV9/13+C3/4T



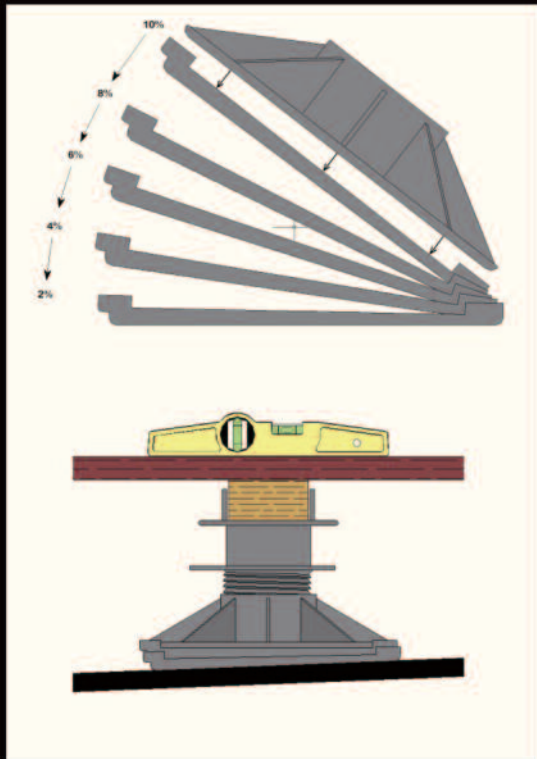
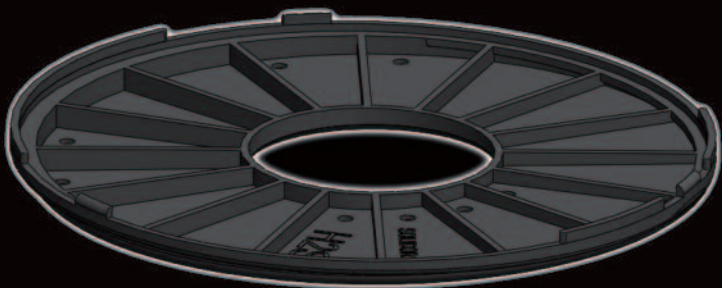
PV11/15+C3/4T



PV15/19+C3/4T









C3/4T



CN2/4T



CP+



C0









F35



AF100



Fitting pieces  
1, 2, 3, 4 or 5 mm





I-SO-PLOT  
(pedestal with protection mat)

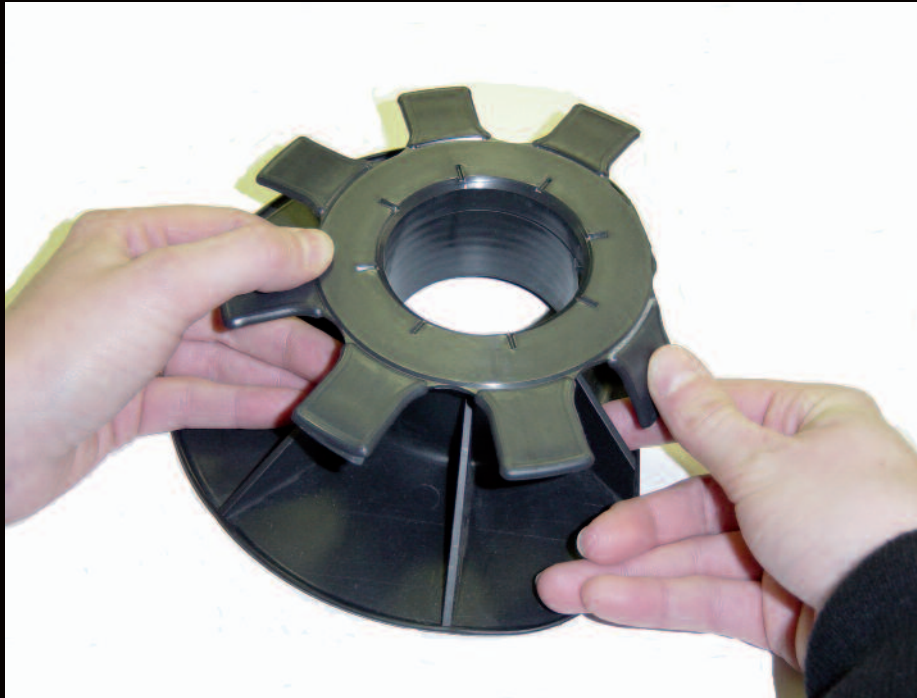


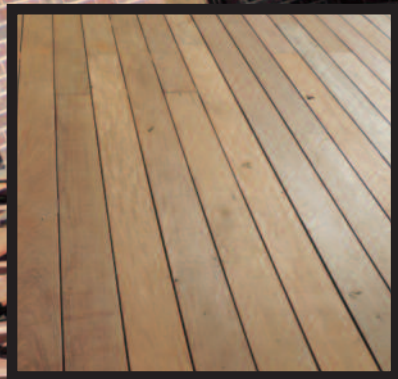
Available on the PV5/9, PV9/13, PV11/15 and PV15/19.

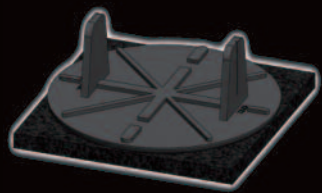




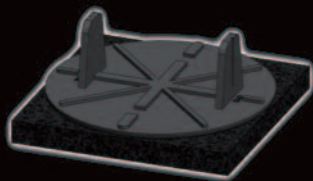
AK 5/9



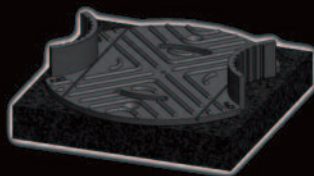




RC10+CIP72



RC14+CIP72



RC19+CP+



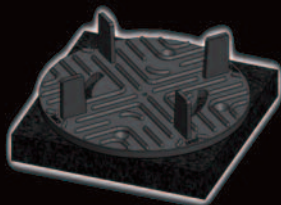
RC24+CP+



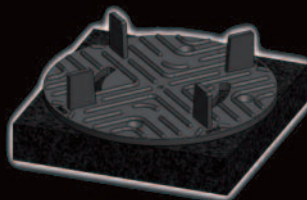




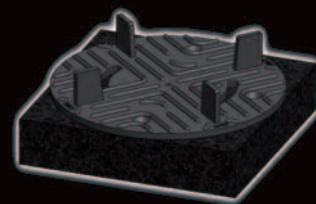
RC10+CI3/4T



RC14+CI3/4T

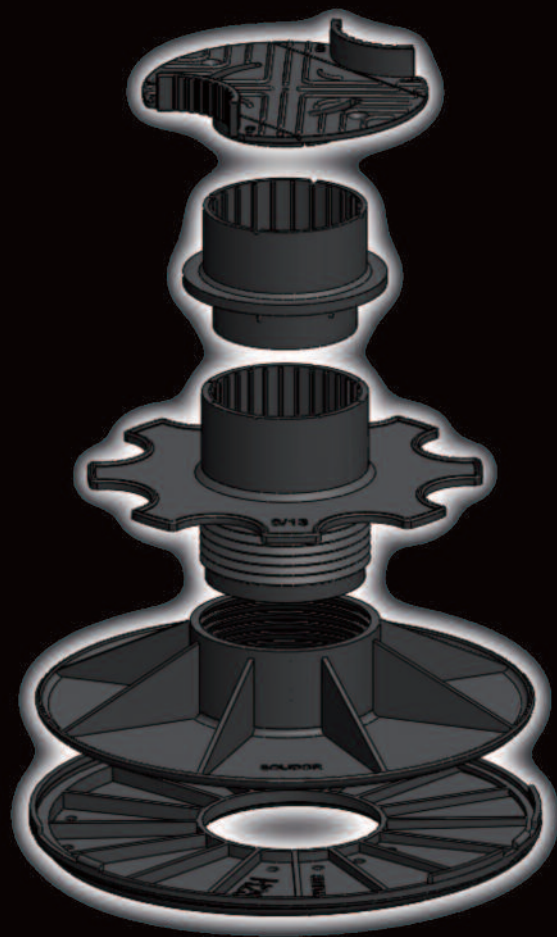


RC19+C3/4T



RC24+C3/4T











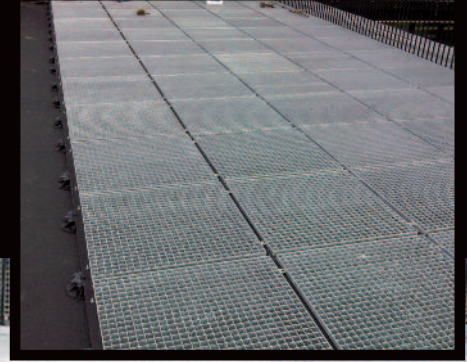
# CHARACTERISTICS:

- MATERIAL : POLYPROPYLENE COMPOUND
  - WEATHER RESISTANCE : AGAINST ALL WEATHER CONDITIONS
  - BLOCKING SYSTEM : ONCE SET TO THE DESIRED HEIGHT, THE FIXATION OF THE SUPPORT IS ENSURED BY THE MUTUAL BLOCKING OF THE PARTS
- STATIC PRESSURE : ADJUSTABLE SUPPORTS BETWEEN 1 AND 19 CM  
 EVERY 600 MM IN LENGTH/WIDTH – 1.350 KG/M<sup>2</sup>  
 EVERY 500 MM IN LENGTH/WIDTH – 2.400 KG/M<sup>2</sup>  
 EVERY 400 MM IN LENGTH/WIDTH – 3.750 KG/M<sup>2</sup>
- GROUND PLATE SURFACE : 300 CM<sup>2</sup>
  - JOINT WIDTH BETWEEN TILES : 3 MM



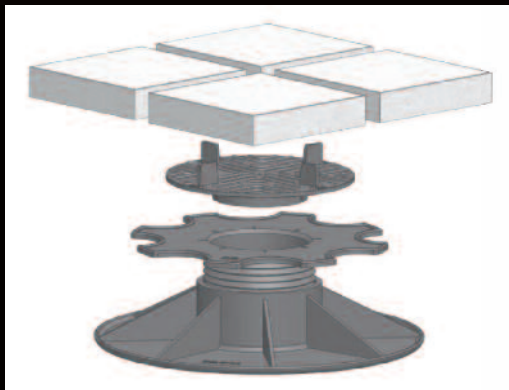
# GOOD TO KNOW

- distance = in general, the distance between the supports is ± 40 to 50 cm
- quantity = in average 6 to 7 pieces per m<sup>2</sup>
- height = for a fine adjustment of the height, we use fitting pieces of 1,2,3,4 or 5 mm.



## CHARACTERISTICS:

- MATERIAL : POLYPROPYLENE COMPOUND
- WEATHER RESISTANCE : AGAINST ALL WEATHER CONDITIONS
- BLOCKING SYSTEM : ONCE SET TO THE DESIRED HEIGHT,  
THE FIXATION OF THE SUPPORT IS ENSURED BY  
THE MUTUAL BLOCKING OF THE PARTS.
- STATIC PRESSURE : ADJUSTABLE SUPPORTS BETWEEN 1 AND 19 CM  
600X600MM (2,25 PCS/M<sup>2</sup>) – 1.350 KG/M<sup>2</sup>  
500X500MM (4 PCS/M<sup>2</sup>) – 2.400 KG/M<sup>2</sup>  
400X400MM (6,25 PCS/M<sup>2</sup>) – 3.750 KG/M<sup>2</sup>
- GROUND PLATE SURFACE : 300 CM<sup>2</sup>
- JOINT WIDTH BETWEEN TILES : 3 MM



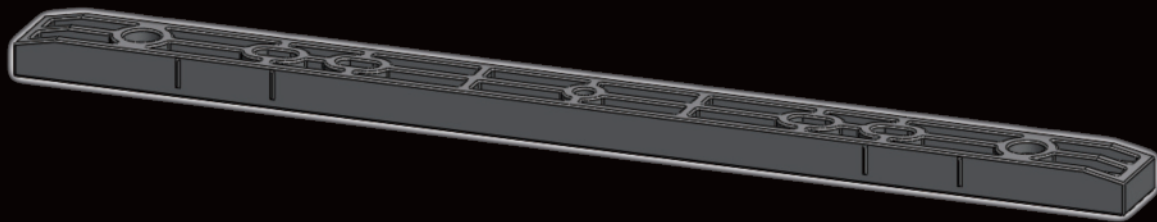
## GOOD TO KNOW

- upper plate = C3/4T
- installation = against the wall, the 2 upper tabs that are parallel to the wall must be pinched off so that the support can be put against the wall.  
= in a corner, the 4 upper tabs must be pinched off.
- quantity = to determine the quantity :  
a) approximate calculation = number of tiles + 15 to 25%  
b) precise calculation = multiply the number of tiles in the length + 1 by the number of tiles in the width + 1.
- stability of tiles on the side: change eventually a row of tiles cut in half with a row of full tiles.

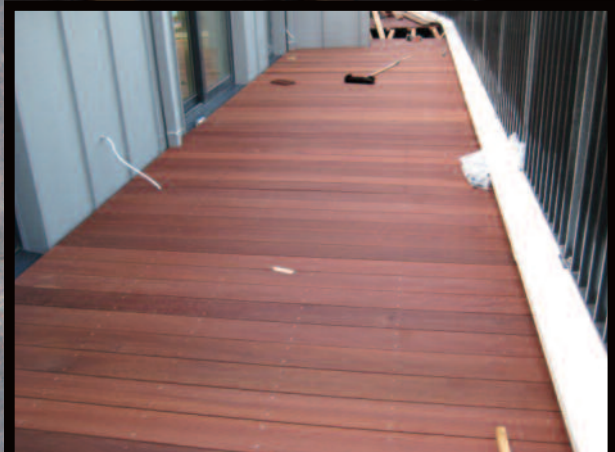




SOLASTICK



S  
O  
L  
A  
S  
T  
I  
C  
K





PV 11/15

PV 11/15

PV 11/15

/15

11/15



Dragers - Solidor  
Sept/2013

Solidor Rubber & Products

Lauwbergstraat 124b

B-8930 Lauwe

[www.solidor.be](http://www.solidor.be)

Tel. 32 (0)56 41 35 70 - Fax 32 (0)56 40 35 70